

# Erie County Mental Health Treatment Gaps and Barriers Analysis [2017]

	<b>Page</b>
<b>Gaps and Barriers Analysis Overview and Results</b>	3
<b>Descriptive Maps of Treatment Program Locations:</b>	
All Programs and Types [with Municipal Boundaries]	6
Emergency Programs [with Municipal Boundaries]	7
Inpatient Programs [with Municipal Boundaries]	8
Outpatient Programs [with Municipal Boundaries]	9
Support Programs [with Municipal Boundaries]	10
<b>Maps of ZIP Codes with Highest Risk:</b>	
Erie County Excluding the City of Buffalo [with Municipal Boundaries]	11
City of Buffalo Only	12
<b>Maps of Highest Risk Locations with Treatment Programs:</b>	
Erie County Excluding the city of Buffalo [with Municipal Boundaries]	
All Programs and Types	13
Emergency Programs	14
Inpatient Programs	15
Outpatient Programs	16
Support Programs	17
City of Buffalo Only	
All Programs and Types	18
Emergency Programs	19
Inpatient Programs	20
Outpatient Programs	21
Support Programs	22
<b>Accessibility Maps:</b>	
Erie County Excluding the city of Buffalo [with Municipal Boundaries]	
All Programs and Types	23
Emergency Programs	24
Inpatient Programs	25
Outpatient Programs	26
Support Programs	27
City of Buffalo Only	
All Programs and Types	28
Emergency Programs	29
Inpatient Programs	30
Outpatient Programs	31

Support Programs	32
<b>Programs by Age:</b>	
ZIP Codes with Child Programs	33
ZIP Codes with Adolescent Programs	34
ZIP Codes with Adult Programs	35

## **Gaps and Barriers Analysis Overview**

The Gaps and Barriers Analysis for Treatment Services in Erie County compares the provision of treatment services within each ZIP code area to selected risk indicators. Gaps are identified where there is a mismatch between the treatment services and risk level (e.g., no/low treatment provision & high risk). First, the distribution of treatment services was evaluated by compiling information about treatment programs and their locations through the NYS Office of Mental Health (OMH). This data was tallied by ZIP code for each program type.

Maps were developed from these data to evaluate the spatial distribution of programs in Erie County and then to examine existing gaps in service provision. The maps of treatment programs are broken down into five categories that correspond to none, one, a few (2 or 3), some (4 or 5) and many (more than 5). The gaps and barriers analysis for treatment programs compares the highest level of aggregated risk for ZIP codes in Erie County with the number of treatment programs. Risk indicator measures were selected using a World Health Organization (WHO) framework for mental health risk (WHO, 2012). These were summed and then re-quartiled for this aggregated risk measure; the locations with the highest level of risk are those with aggregated measures that fall in the fourth quartiles of either ZIP codes in Erie County Excluding City of Buffalo or ZIP codes in the City of Buffalo Only.

Accessibility was measured using definitions instituted by the U.S. Department of Agriculture Economic Research Service through research on food access. In urban areas, accessibility is defined as being within 1 mile; and in rural areas, within 10 miles. Maps showing ZIP codes of highest risk were derived by creating straight line distance buffers around the geocoded locations of NYS Office of Mental Health (OMH) treatment program locations for both Erie County excluding Buffalo and the City of Buffalo only. These locations included programs from neighboring counties if they were within 10 miles of the Erie County border.

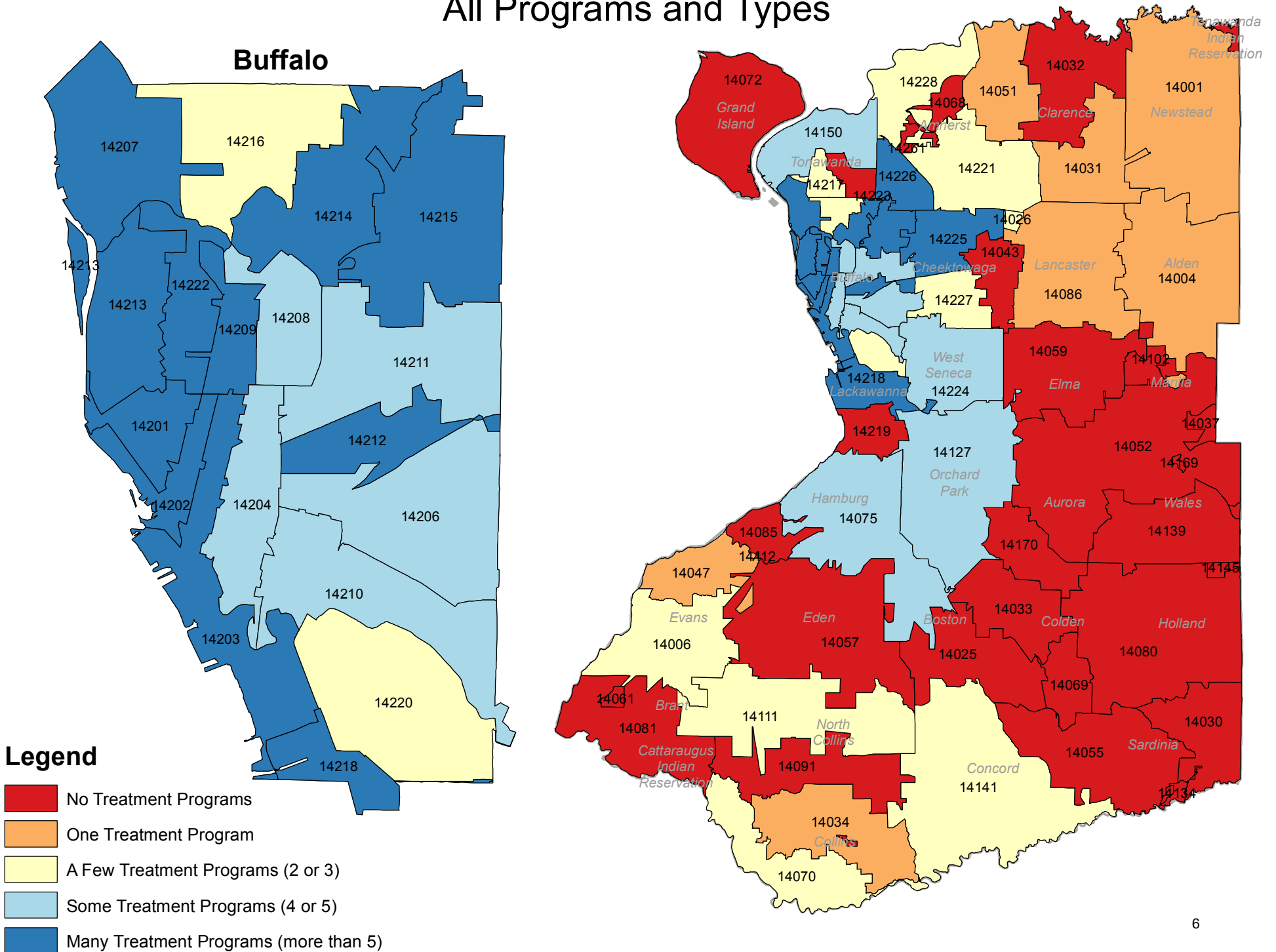
## **Gaps and Barriers Analysis Results**

- Descriptive Maps of Treatment Program Locations
  - Treatment programs are concentrated in the more urbanized northwestern portion of Erie County, with many ZIP codes in the eastern portions of the county having no programs. Since 2015, overall program coverage has shifted to cover more locations in the northeastern and southwestern part of the County.
  - Many of the ZIP codes in the City of Buffalo contain 4 or more treatment programs
  - Emergency programs are concentrated in the City of Buffalo's East Side, primarily in ZIP Code 14215.
  - Inpatient programs primarily provide coverage within the City of Buffalo and Cheektowaga, however since 2015 several programs that had existed outside of the city in areas such as Lackawanna and West Seneca have lost coverage. Inpatient programs are concentrated in the downtown area and the East Side of Buffalo.
  - Given their number, the distribution of Outpatient programs is similar to the distribution for all programs.

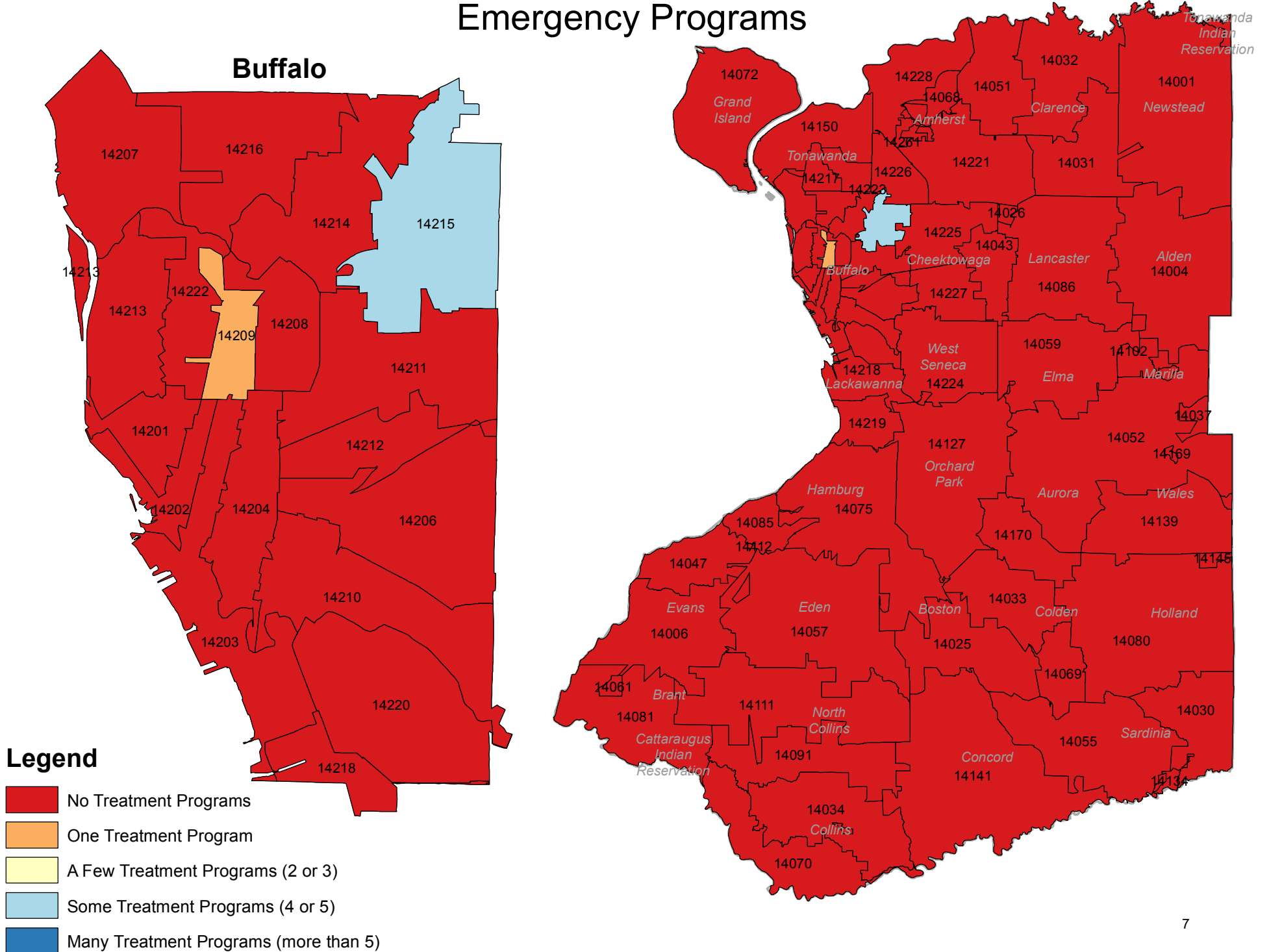
- Support programs are concentrated in the City of Buffalo with a few exceptions in rural locations. Since 2015, some rural areas in the eastern and southwestern portions of the county have gained coverage. There was some coverage lost in the city, however no locations within the city have lost coverage completely.
- Maps of Highest Risk Locations with Treatment Programs
  - Erie County Excluding City of Buffalo
    - Overall, there is good alignment of coverage in the ZIP Codes with highest risk. There are still several ZIP Codes around Hamburg, Depew, and the Town of Tonawanda that are lacking in coverage, specifically 14223, 14043 and 14219.
    - Emergency, inpatient, and support programs are concentrated mostly in the City of Buffalo. There are a few areas in the southern first ring suburbs around West Seneca and Lackawanna that have some inpatient programs and parts of Cheektowaga and the Town of Tonawanda have some support coverage, but overall coverage for these program types is poor outside of the city.
    - There is relatively good coverage of outpatient programs in many areas of the County, including more rural areas. However, Cheektowaga, Lackawanna and parts of the Town of Tonawanda are lacking coverage.
  - City of Buffalo Only
    - Overall, there is good coverage for mental health programs with all of the highest risk ZIP Codes in the city having four or more programs.
    - The alignment of emergency and inpatient programs within the city to areas of highest risk is generally poor. The highest concentrations of these types of programs are in ZIP Code 14215 on the East Side, while ZIP Codes 14202 and 14203, which include portions of downtown Buffalo, are lacking in coverage of either program type.
    - Overall coverage of outpatient and support programs is very good within the city, though ZIP Code 14211 only has one support program.
- Accessibility maps
  - Erie County Excluding City of Buffalo
    - Overall access to mental health programs is good. All highest risk ZIP Codes have access to programs within ten miles, including access to programs outside of Erie County.
    - Accessibility to inpatient, outpatient and support programs is well aligned to areas of highest risk. Portions of the town of Evans are lacking access to inpatient and support programs. All highest risk ZIP Codes have access to outpatient programs. Nearly all first ring suburb areas with highest risk have access to emergency programs within ten miles.
  - City of Buffalo Only
    - Overall coverage in the city is good, with small portions of ZIP Code 14215 and the southern half of ZIP Code 14203 are lacking access to any program type within one mile.

- Access to emergency and inpatient programs are concentrated around portions of northeast and central parts of the city. Portions of ZIP Codes 14215 and 14211 have access to these programs, as well as extreme northern parts of ZIP Codes 14202 and 14203. The remainder of these areas are without access within one mile.
  - Access to outpatient and support programs is well aligned to highest risk areas, with only the southern half of ZIP Code 14203 and eastern portions of ZIP Code 14215 having a lack of access. A relatively small portion of ZIP Code 14211 also lacks access to outpatient programs within one mile.
- Programs by Age
  - Coverage of areas for mental health programs by age is good overall and aligns to the distribution of populated areas within the County. The City of Buffalo is fully covered in all ZIP codes with access to programs across all ages. A majority of locations in the eastern rural portions of the county lack access, but coverage in the northeastern and southwestern portions of the county is generally good.

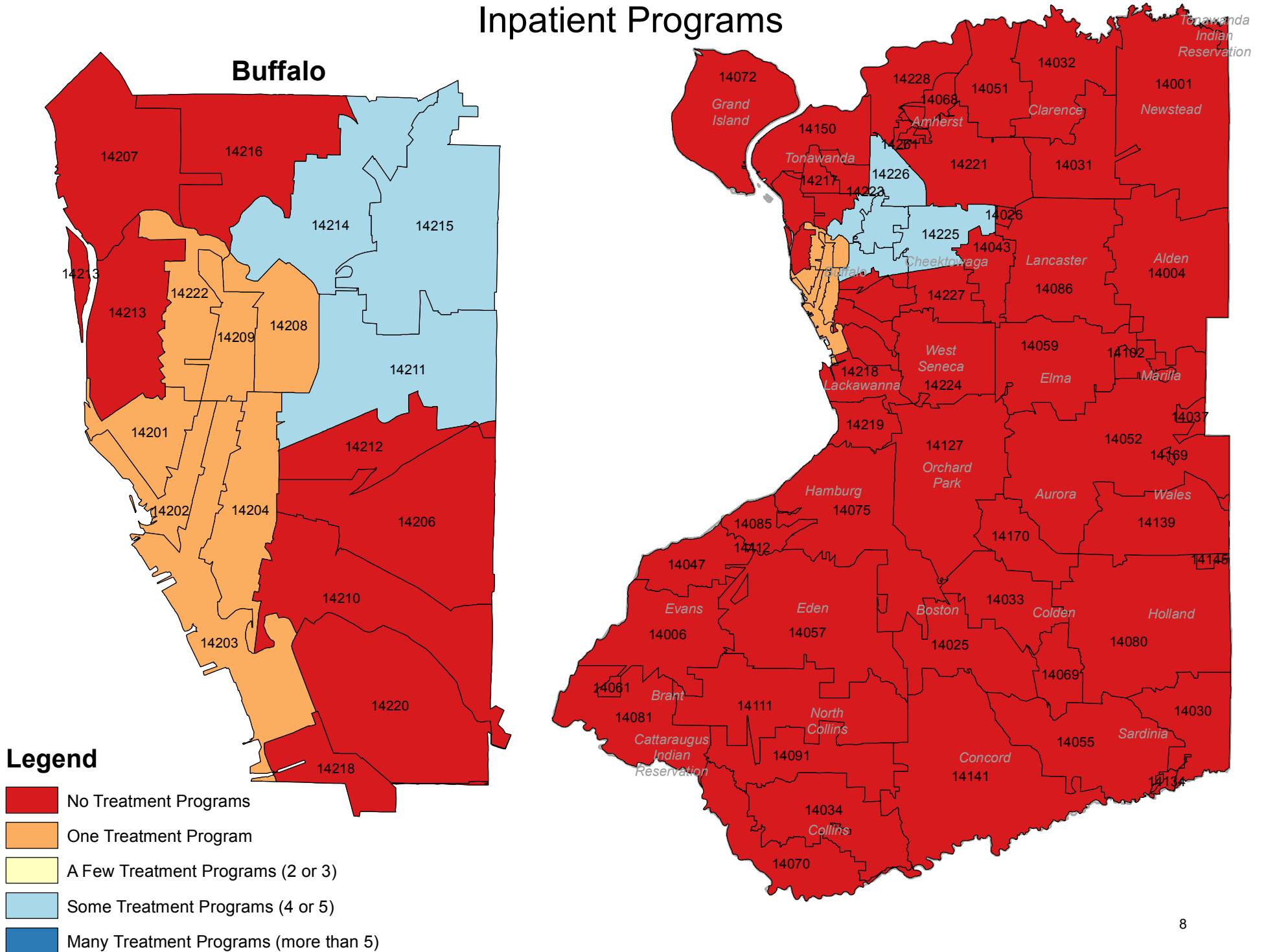
# Erie County Mental Health Treatment Programs: All Programs and Types



# Erie County Mental Health Treatment Programs: Emergency Programs



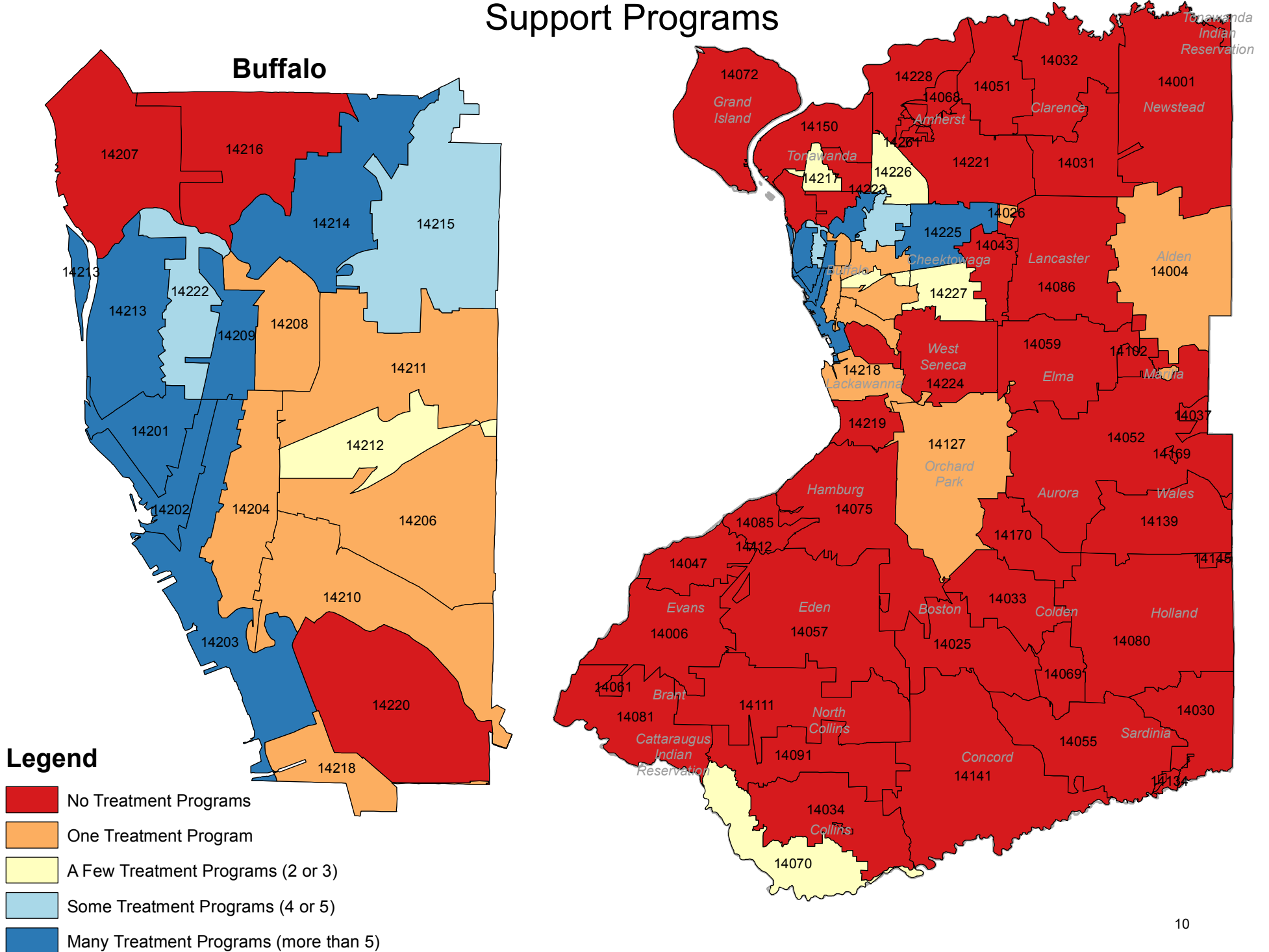
# Erie County Mental Health Treatment Programs: Inpatient Programs



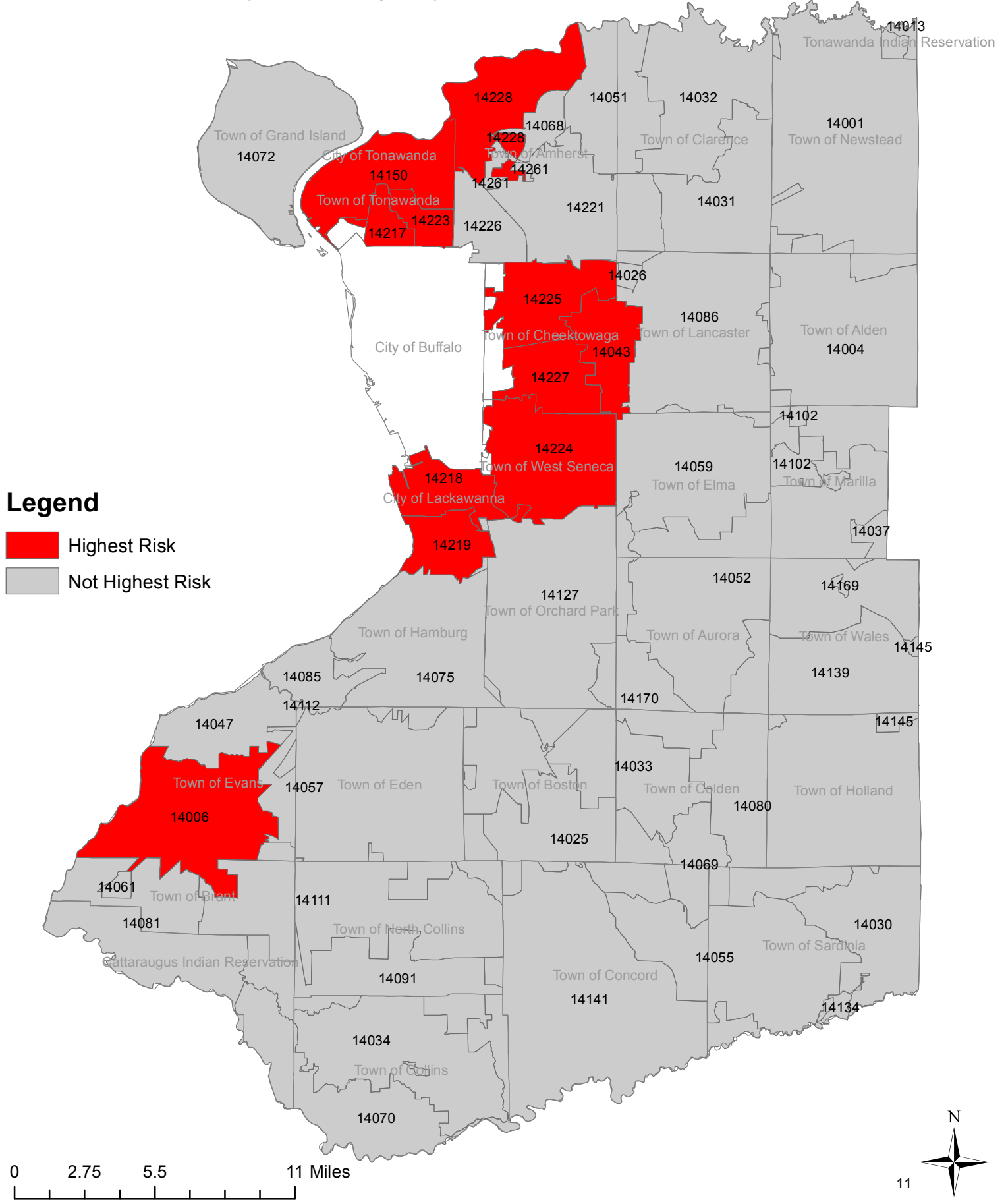




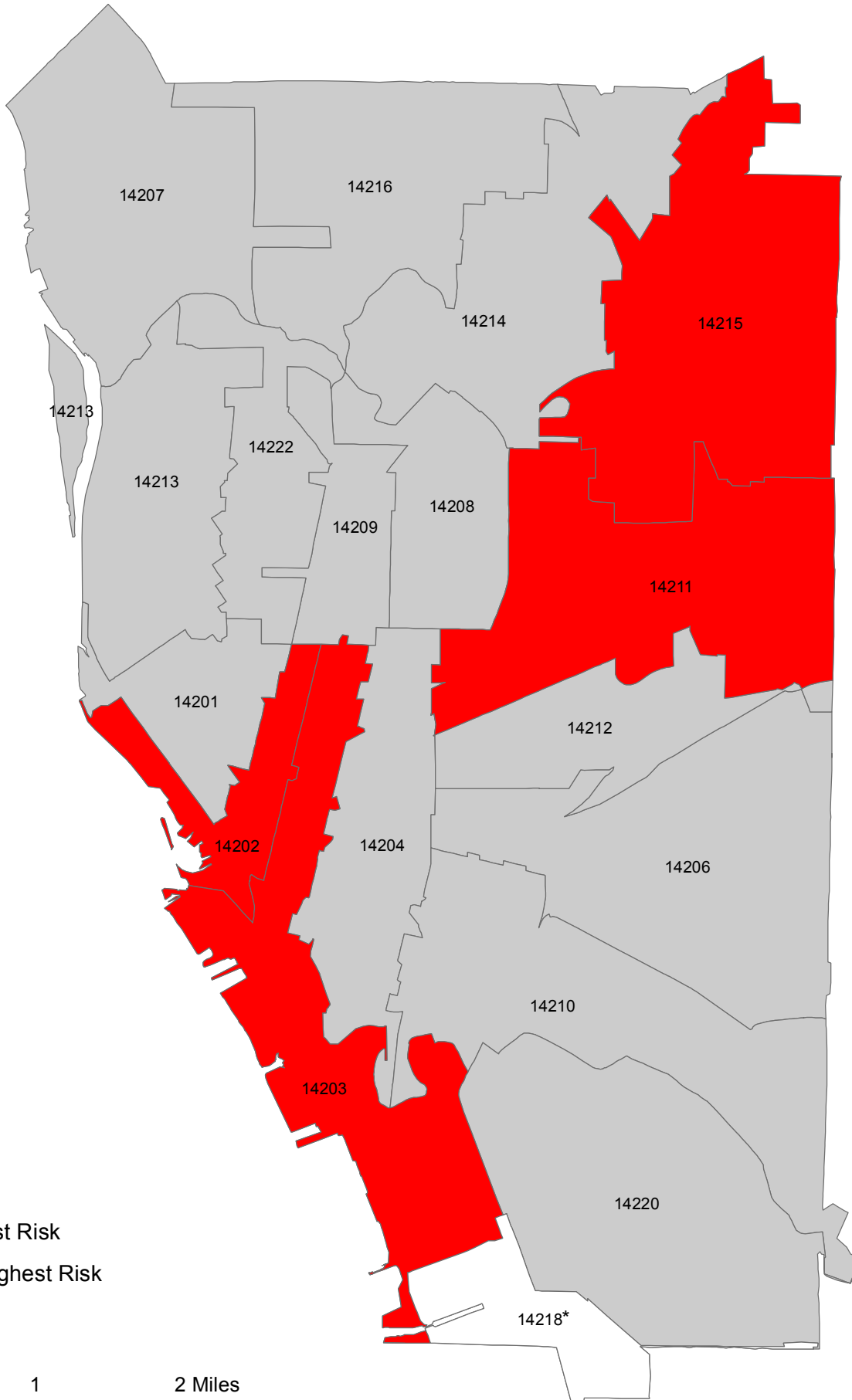
# Erie County Mental Health Treatment Programs: Support Programs





# ZIP Codes with Highest Level of Aggregated Risk by Number of Mental Health Treatment Programs [Erie County Excluding City of Buffalo, with Municipal Boundaries]



# ZIP Codes with Highest Level of Aggregated Risk [City of Buffalo Only]



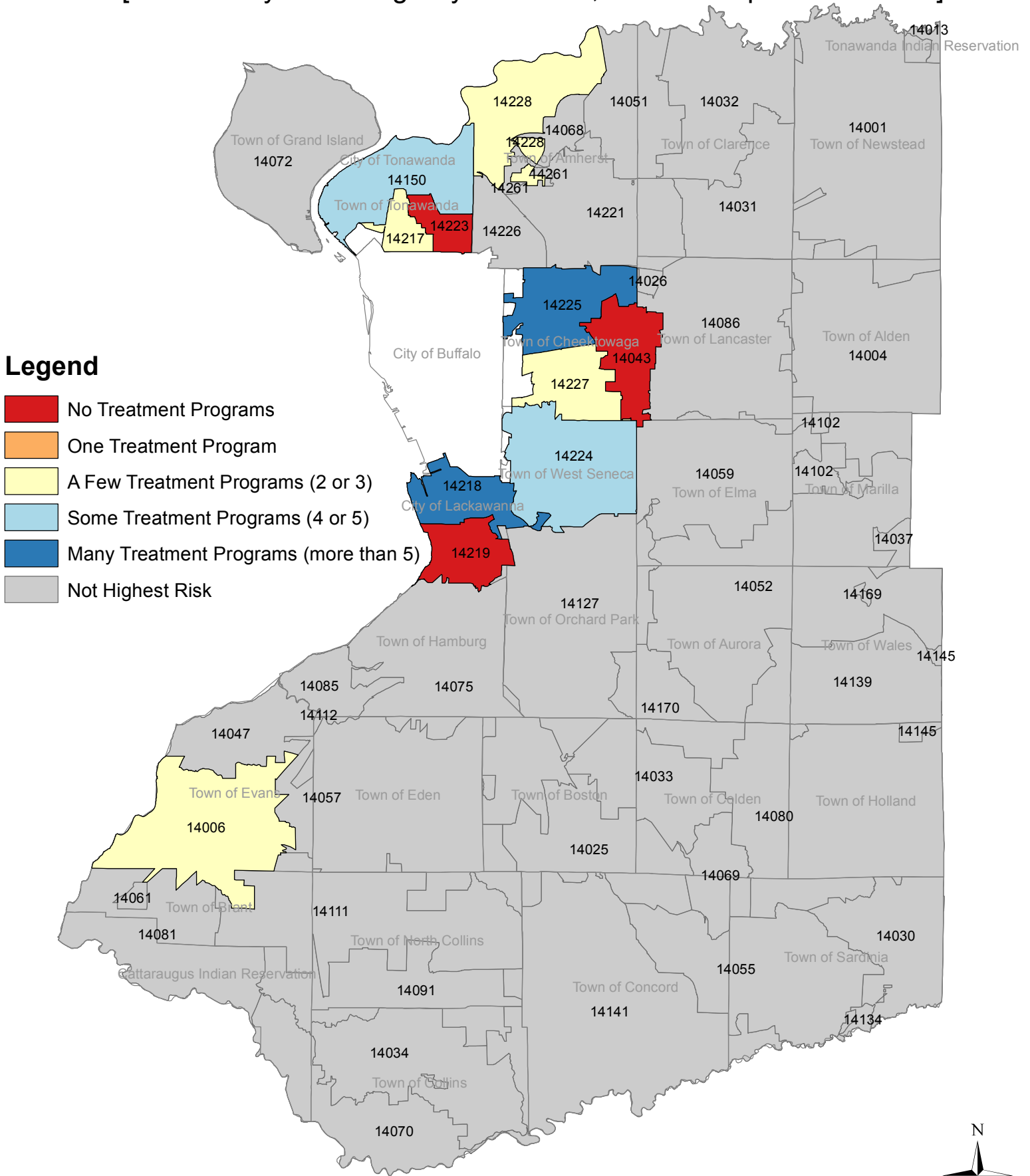
## Legend

-  Highest Risk
-  Not Highest Risk



\*The majority of ZIP Code 14218 is outside the City of Buffalo.

# ZIP Codes with Highest Level of Aggregated Risk by Number of Mental Health Treatment Programs [Erie County Excluding City of Buffalo, with Municipal Boundaries]



## Legend

- No Treatment Programs
- One Treatment Program
- A Few Treatment Programs (2 or 3)
- Some Treatment Programs (4 or 5)
- Many Treatment Programs (more than 5)
- Not Highest Risk

0 2.75 5.5 11 Miles

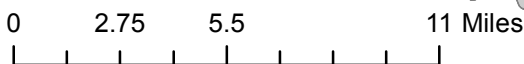
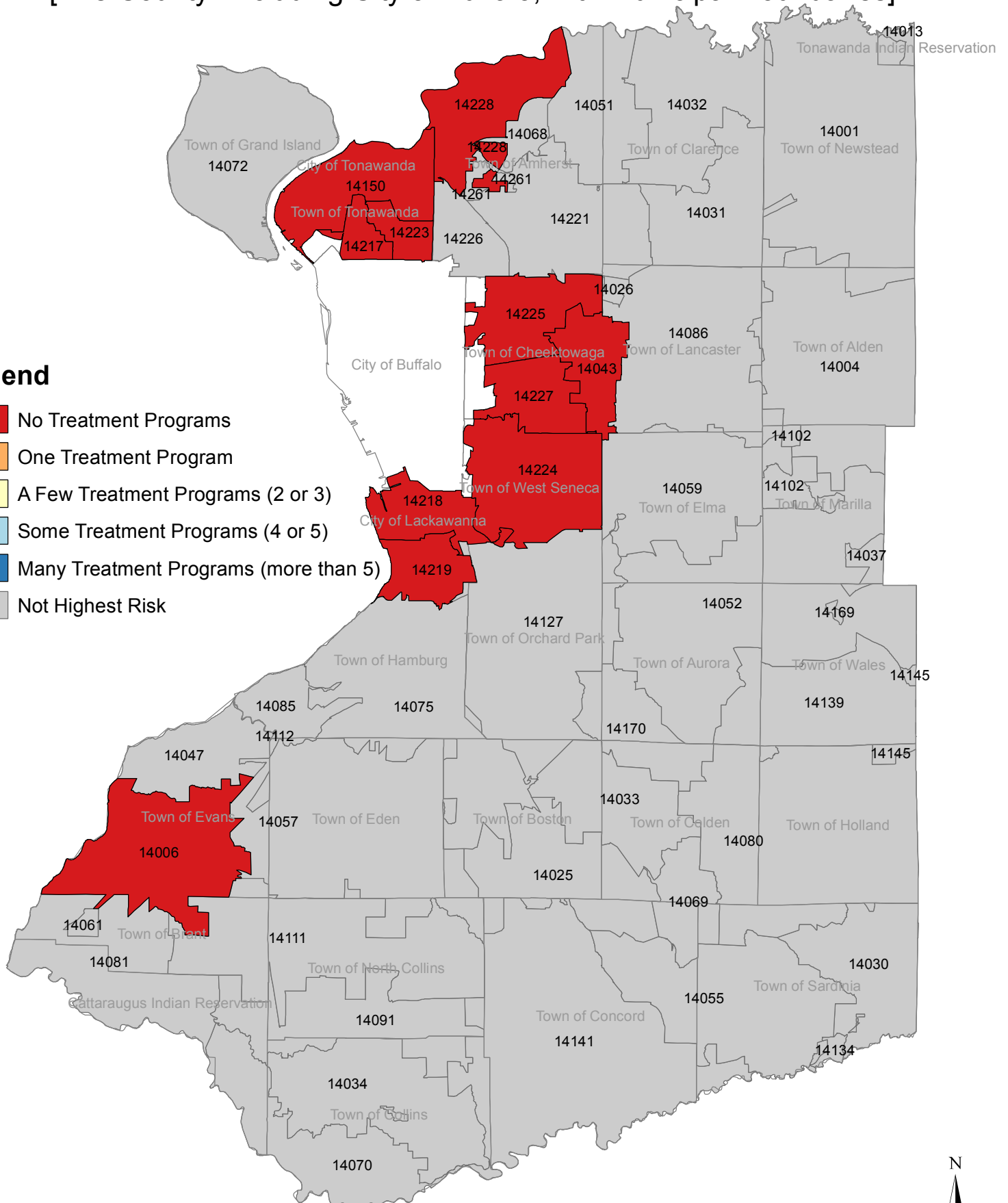


# ZIP Codes with Highest Level of Aggregated Risk by Number of Emergency Programs

[Erie County Excluding City of Buffalo, with Municipal Boundaries]

## Legend

- No Treatment Programs
- One Treatment Program
- A Few Treatment Programs (2 or 3)
- Some Treatment Programs (4 or 5)
- Many Treatment Programs (more than 5)
- Not Highest Risk

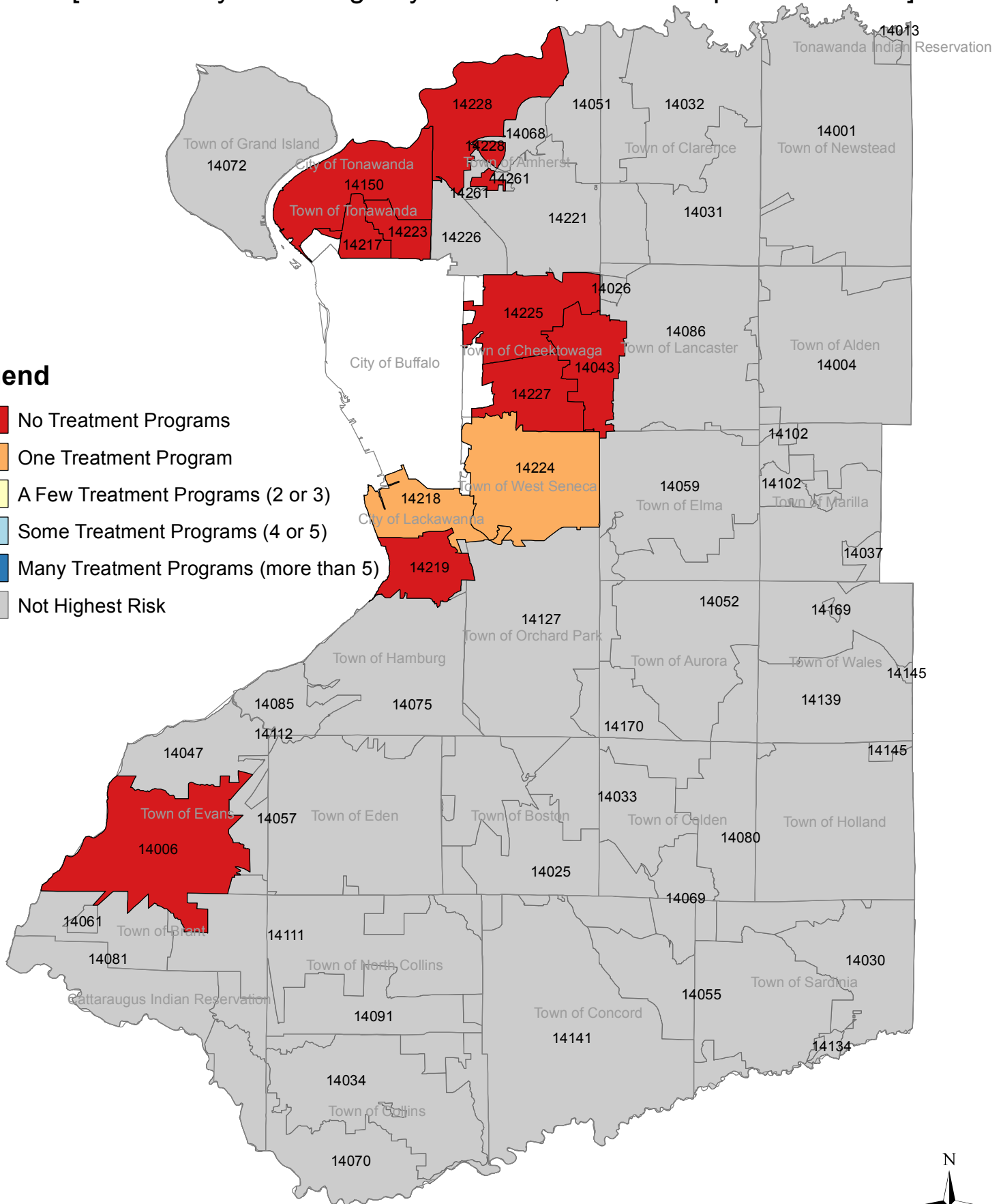


# ZIP Codes with Highest Level of Aggregated Risk by Number of Inpatient Programs

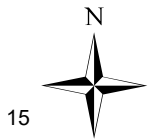
[Erie County Excluding City of Buffalo, with Municipal Boundaries]

## Legend

- No Treatment Programs
- One Treatment Program
- A Few Treatment Programs (2 or 3)
- Some Treatment Programs (4 or 5)
- Many Treatment Programs (more than 5)
- Not Highest Risk



0 2.75 5.5 11 Miles

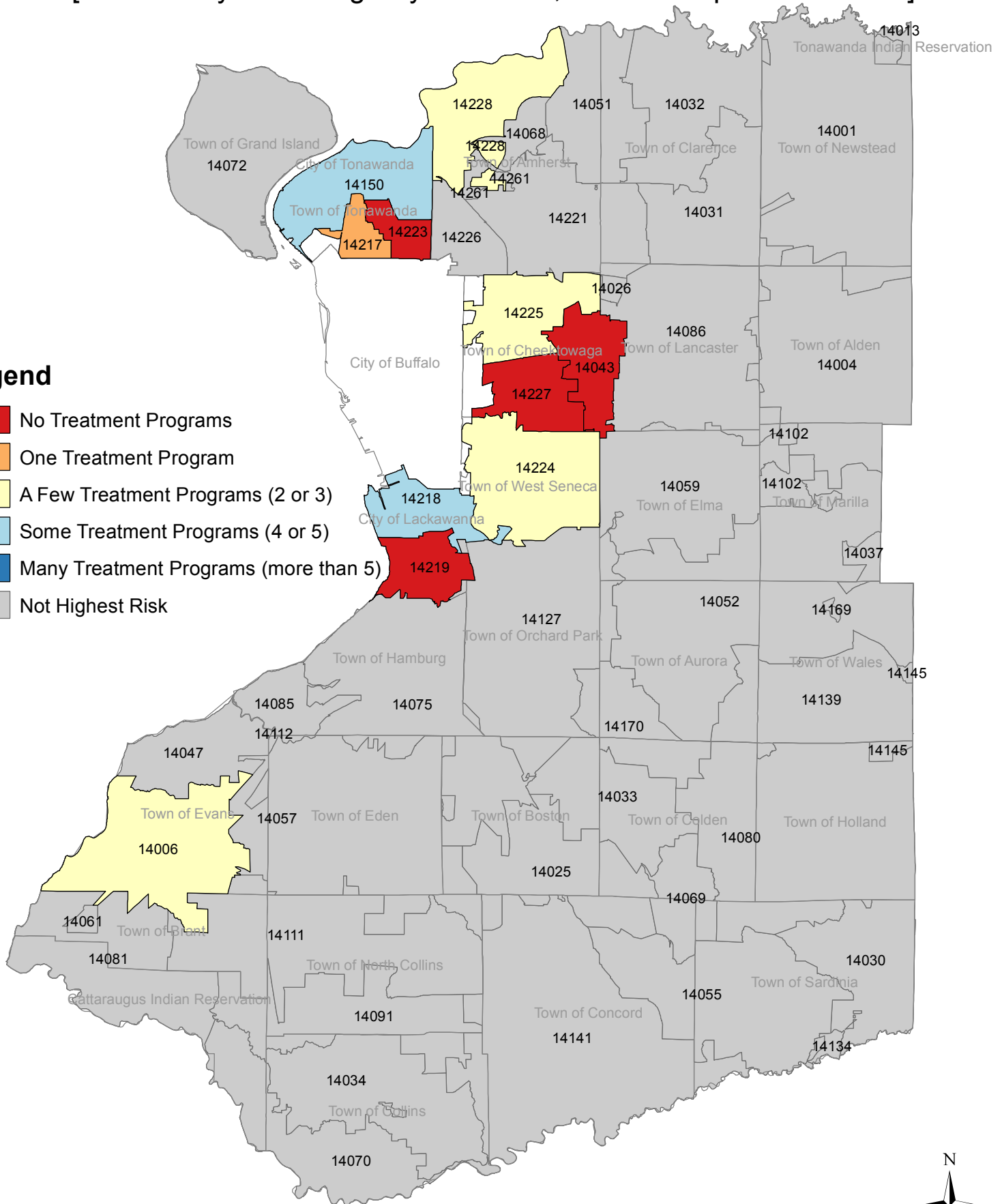


# ZIP Codes with Highest Level of Aggregated Risk by Number of Outpatient Programs

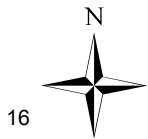
[Erie County Excluding City of Buffalo, with Municipal Boundaries]

## Legend

- No Treatment Programs
- One Treatment Program
- A Few Treatment Programs (2 or 3)
- Some Treatment Programs (4 or 5)
- Many Treatment Programs (more than 5)
- Not Highest Risk



0 2.75 5.5 11 Miles



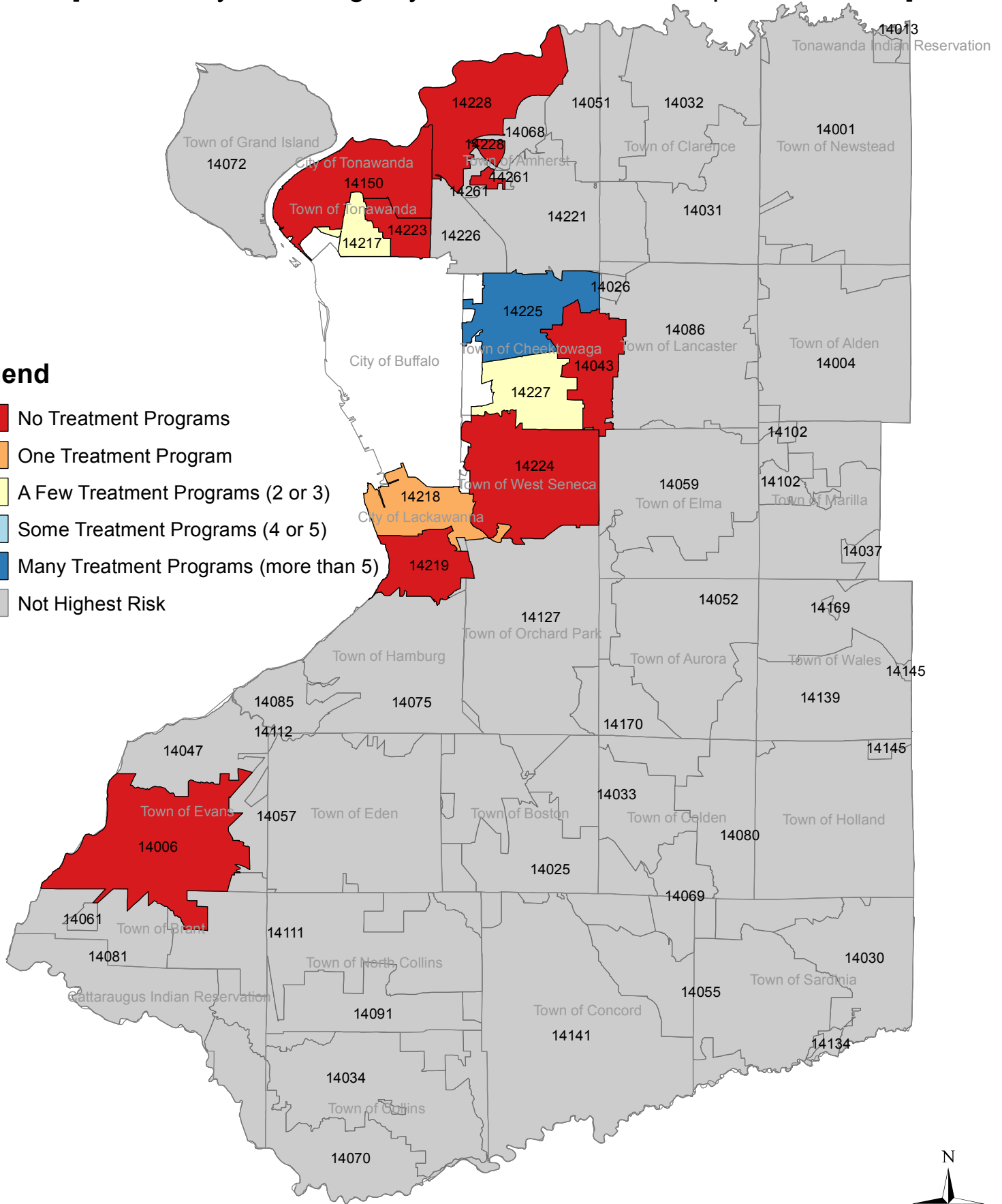


# ZIP Codes with Highest Level of Aggregated Risk by Number of Support Programs

[Erie County Excluding City of Buffalo, with Municipal Boundaries]

## Legend

- No Treatment Programs
- One Treatment Program
- A Few Treatment Programs (2 or 3)
- Some Treatment Programs (4 or 5)
- Many Treatment Programs (more than 5)
- Not Highest Risk

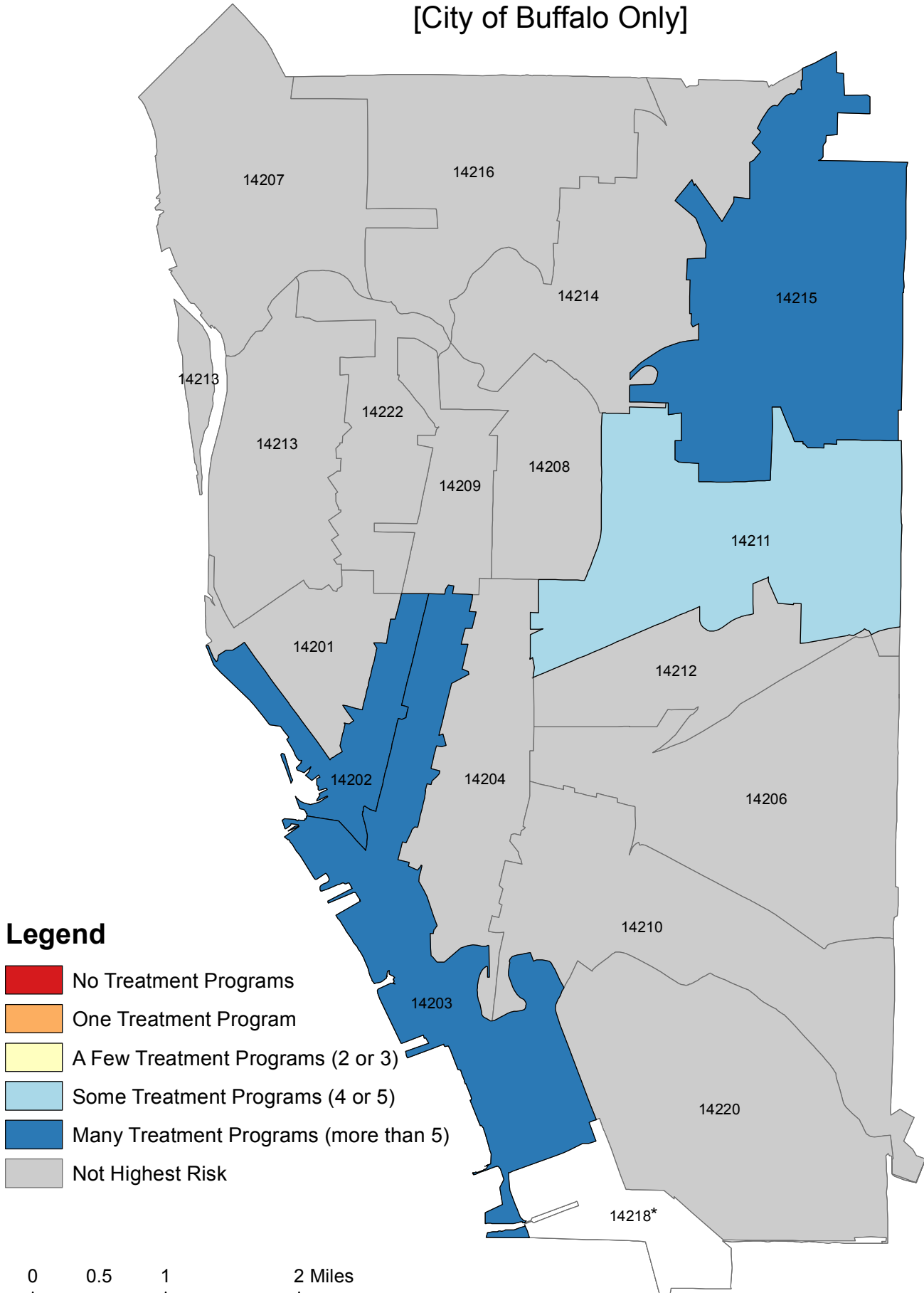


0 2.75 5.5 11 Miles



# ZIP Codes with Highest Level of Aggregated Risk by Number of Mental Health Treatment Programs

[City of Buffalo Only]



## Legend

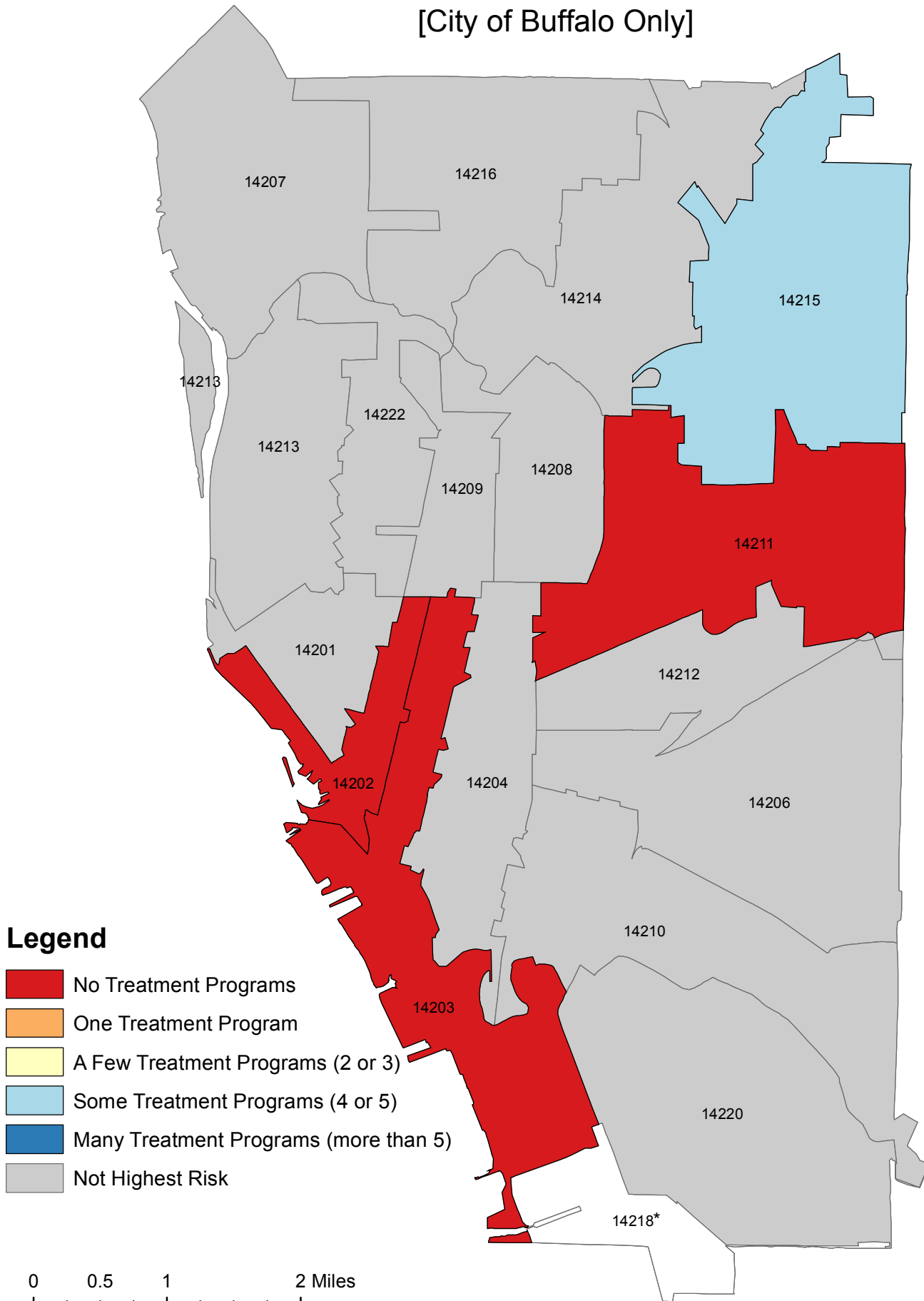
- No Treatment Programs
- One Treatment Program
- A Few Treatment Programs (2 or 3)
- Some Treatment Programs (4 or 5)
- Many Treatment Programs (more than 5)
- Not Highest Risk



\*The majority of ZIP Code 14218 is outside the City of Buffalo.

# ZIP Codes with Highest Level of Aggregated Risk by Number of Emergency Programs

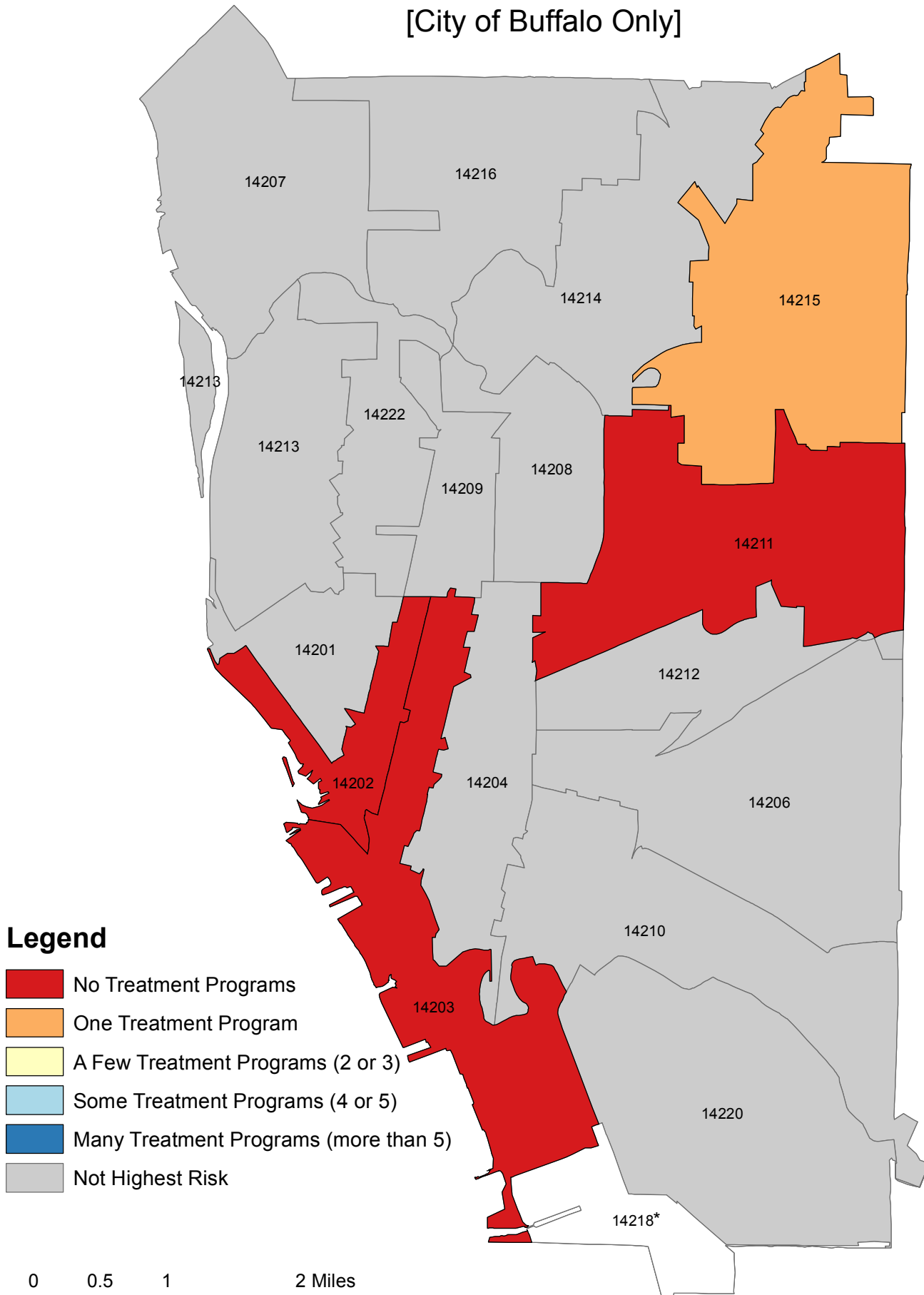
[City of Buffalo Only]



\*The majority of ZIP Code 14218 is outside the City of Buffalo.

# ZIP Codes with Highest Level of Aggregated Risk by Number of Inpatient Programs

[City of Buffalo Only]



## Legend

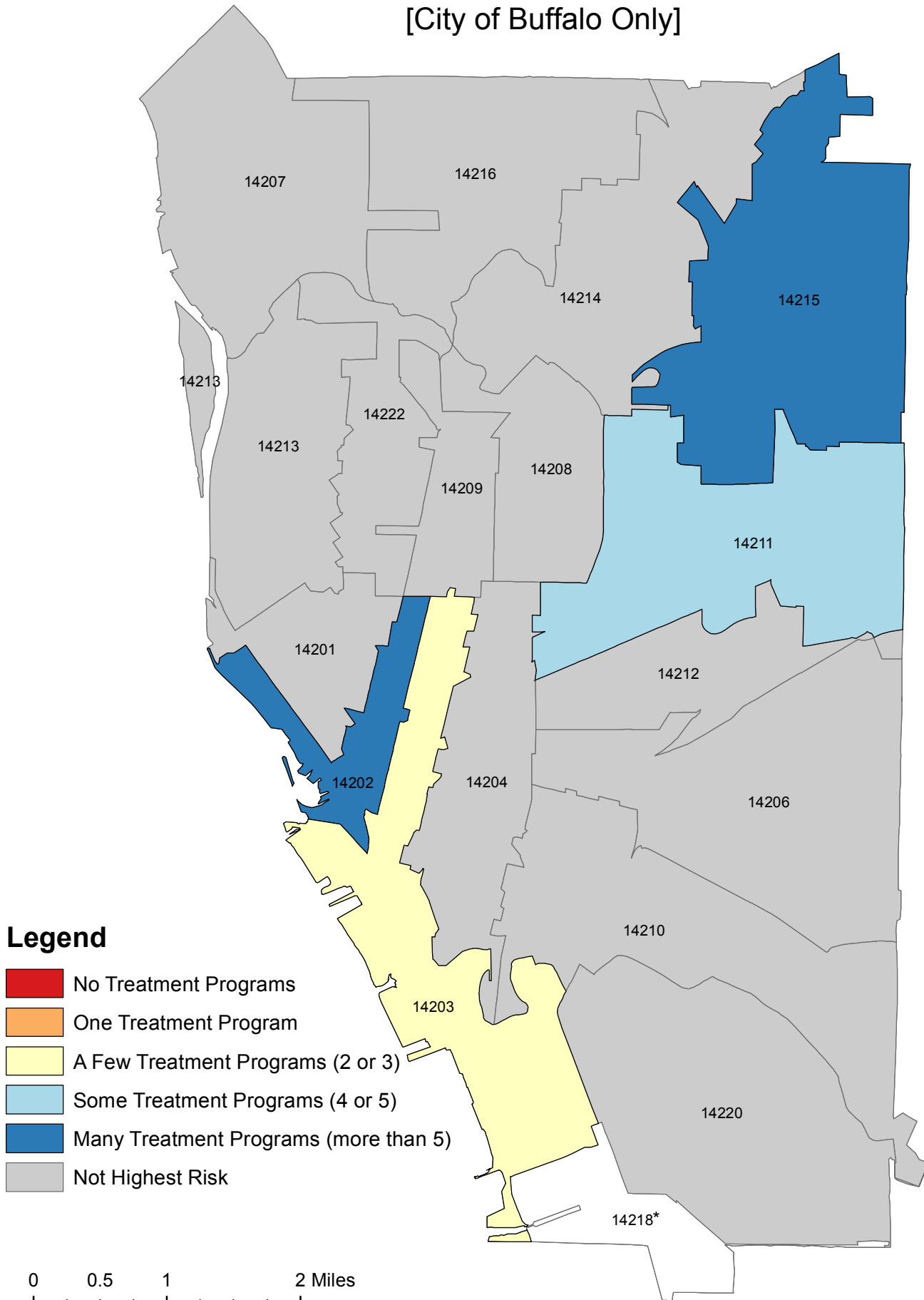
- No Treatment Programs
- One Treatment Program
- A Few Treatment Programs (2 or 3)
- Some Treatment Programs (4 or 5)
- Many Treatment Programs (more than 5)
- Not Highest Risk

0 0.5 1 2 Miles

\*The majority of ZIP Code 14218 is outside the City of Buffalo.

# ZIP Codes with Highest Level of Aggregated Risk by Number of Outpatient Programs

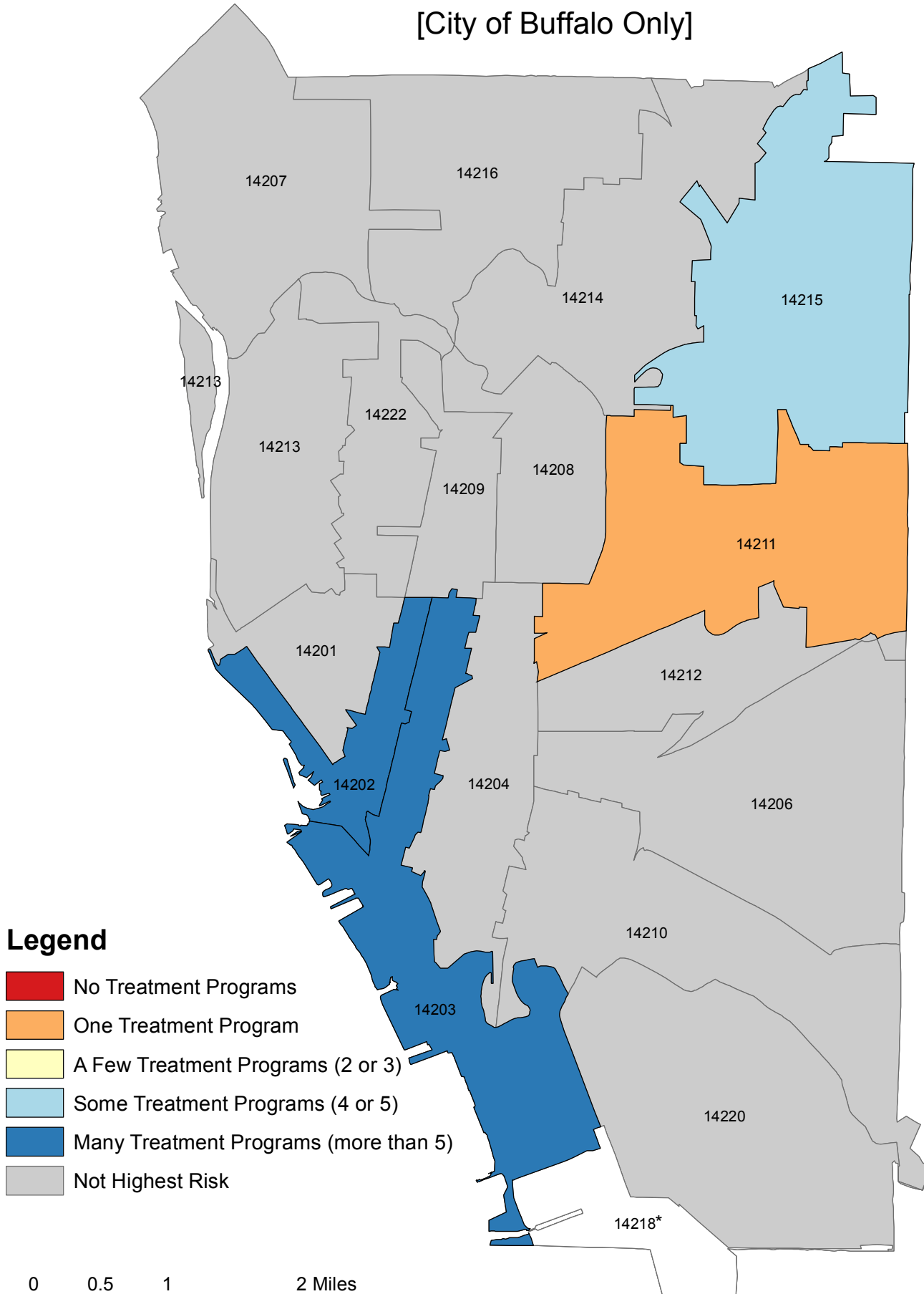
[City of Buffalo Only]



\*The majority of ZIP Code 14218 is outside the City of Buffalo.

# ZIP Codes with Highest Level of Aggregated Risk by Number of Support Programs

[City of Buffalo Only]



## Legend

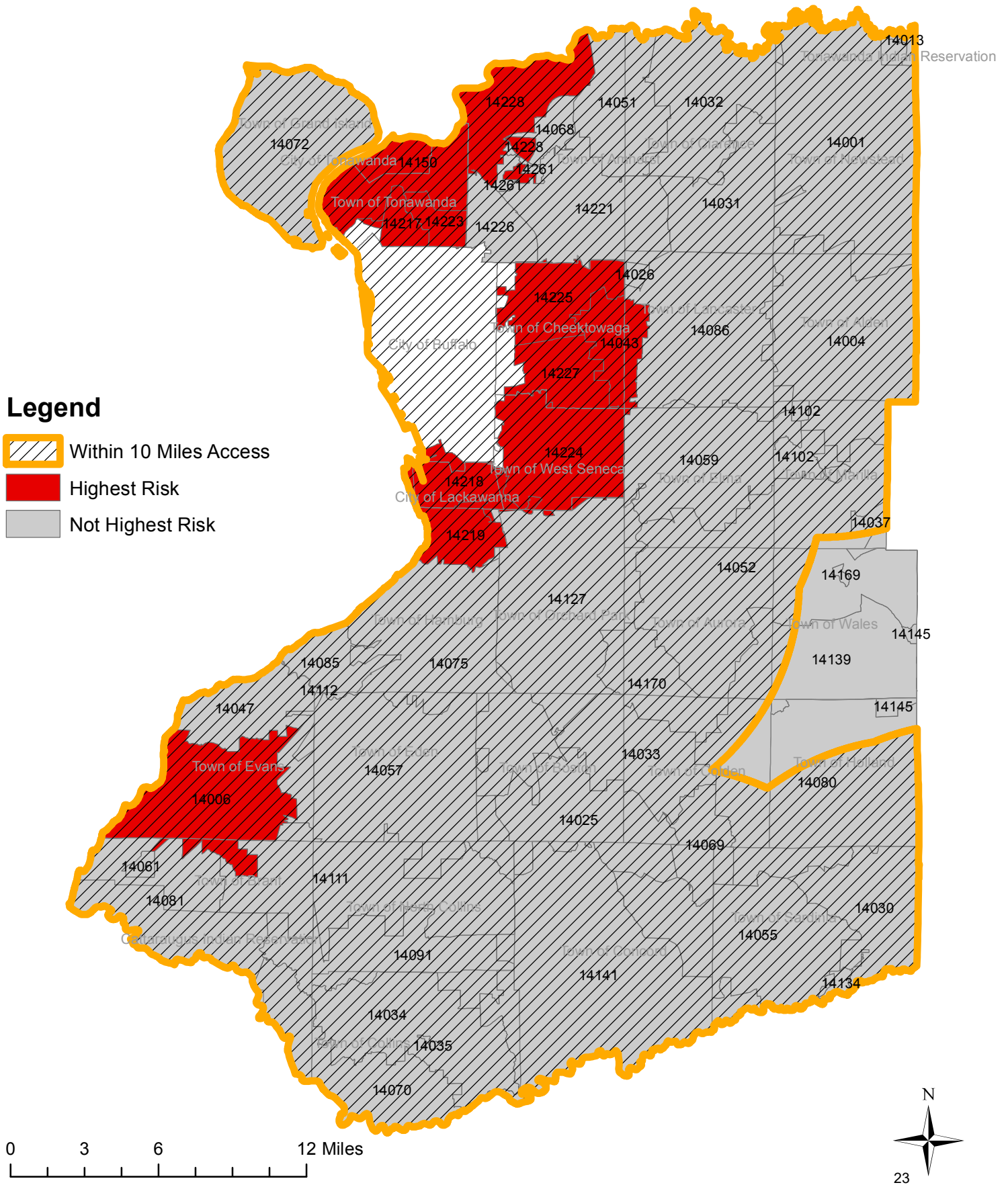
- No Treatment Programs
- One Treatment Program
- A Few Treatment Programs (2 or 3)
- Some Treatment Programs (4 or 5)
- Many Treatment Programs (more than 5)
- Not Highest Risk

0 0.5 1 2 Miles

\*The majority of ZIP Code 14218 is outside the City of Buffalo.

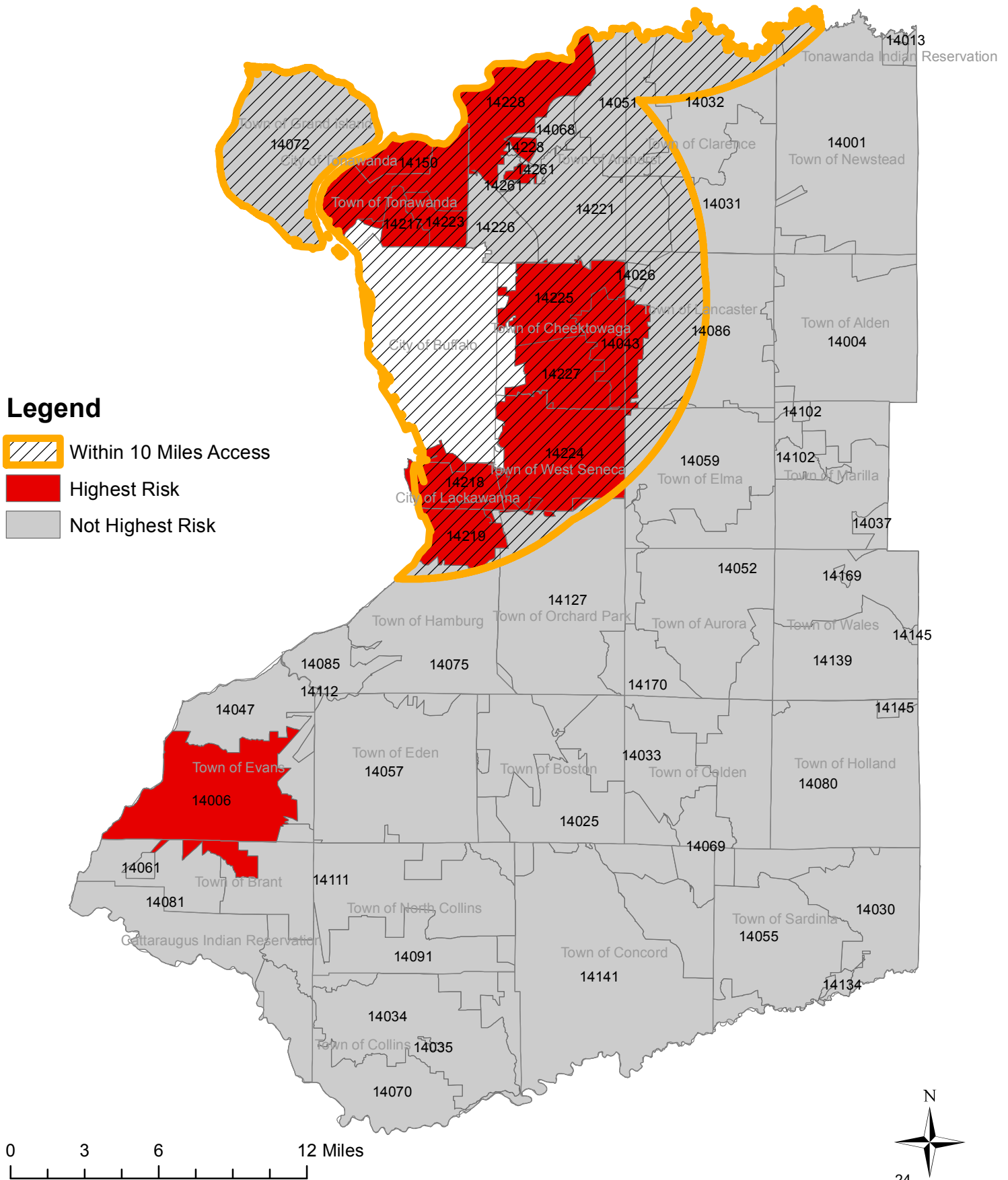
# Accessibility to Mental Health Programs (Within 10 Miles Access)

[Erie County Excluding City of Buffalo, with Municipal Boundaries]



# Accessibility to Emergency Programs (Within 10 Miles Access)

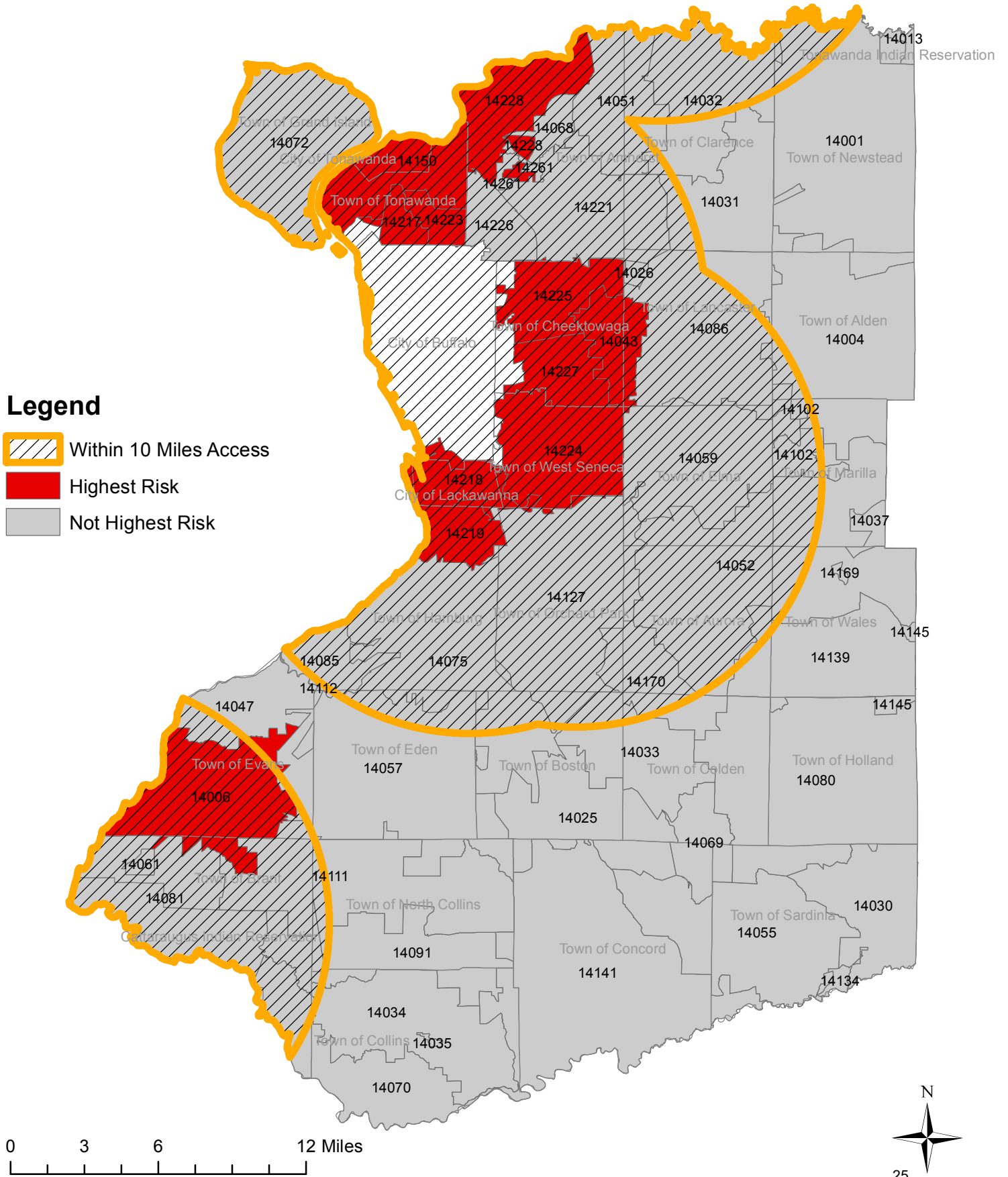
[Erie County Excluding City of Buffalo, with Municipal Boundaries]





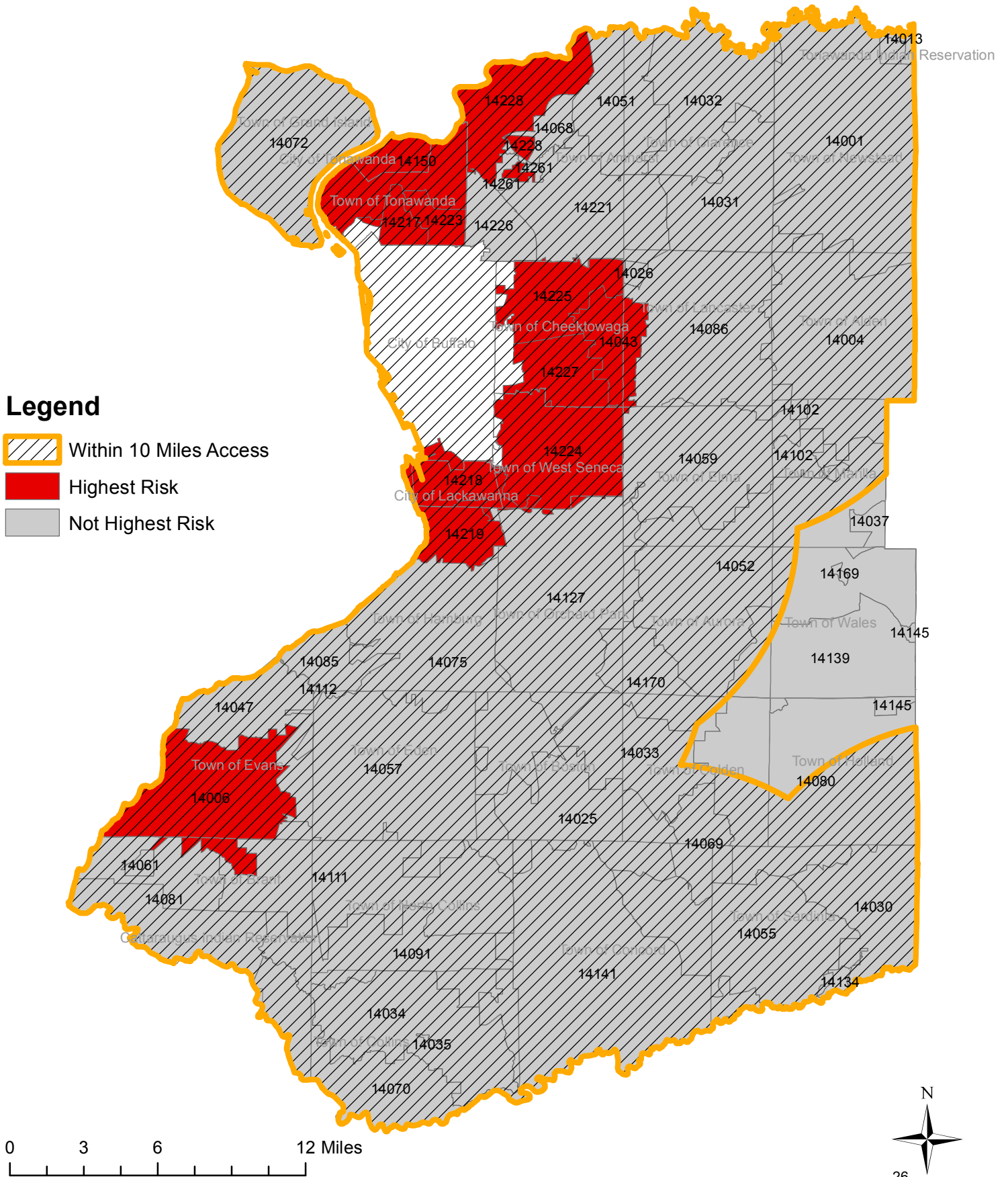
# Accessibility to Inpatient Programs (Within 10 Miles Access)

[Erie County Excluding City of Buffalo, with Municipal Boundaries]



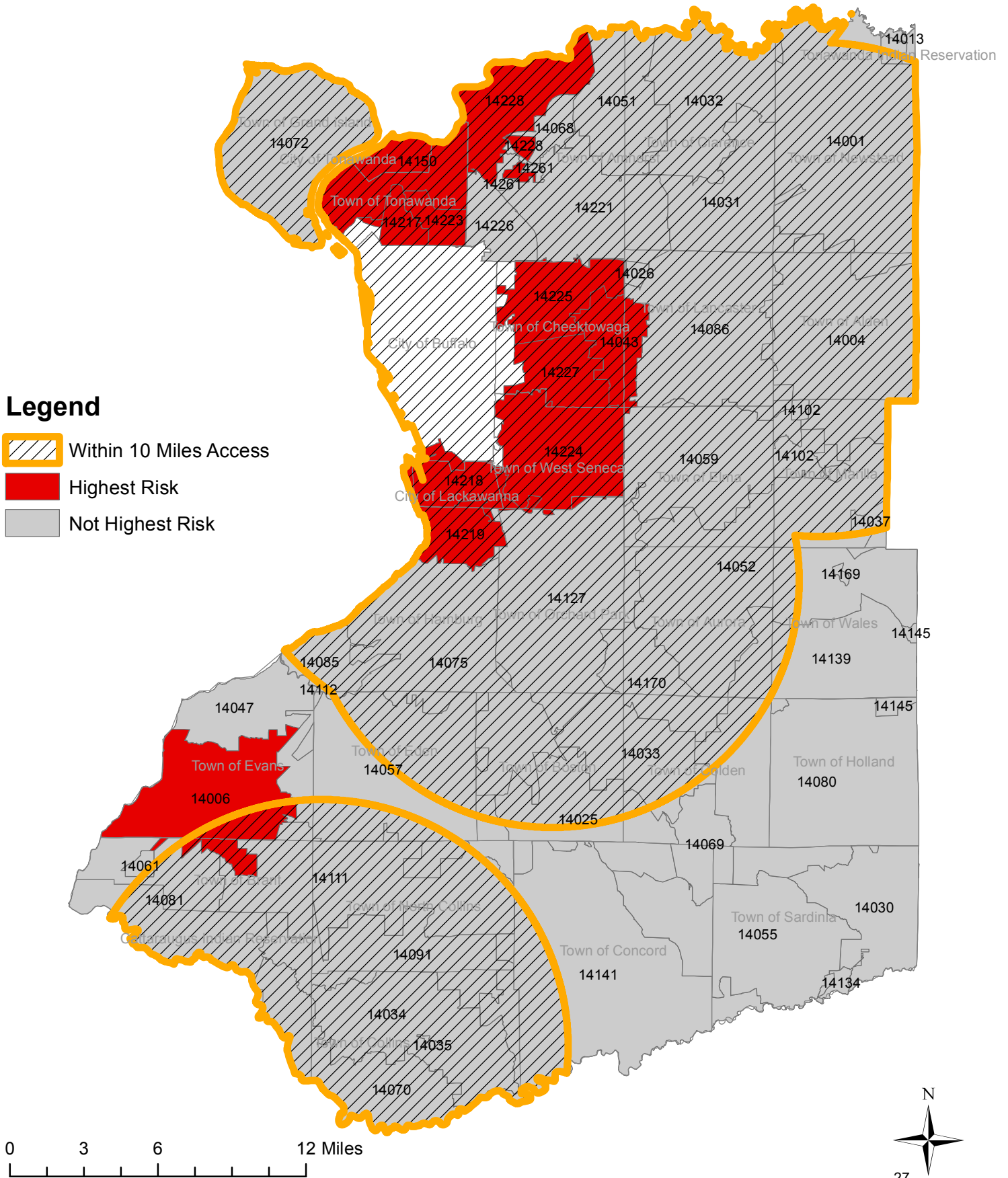
# Accessibility to Outpatient Programs (Within 10 Miles Access)

[Erie County Excluding City of Buffalo, with Municipal Boundaries]

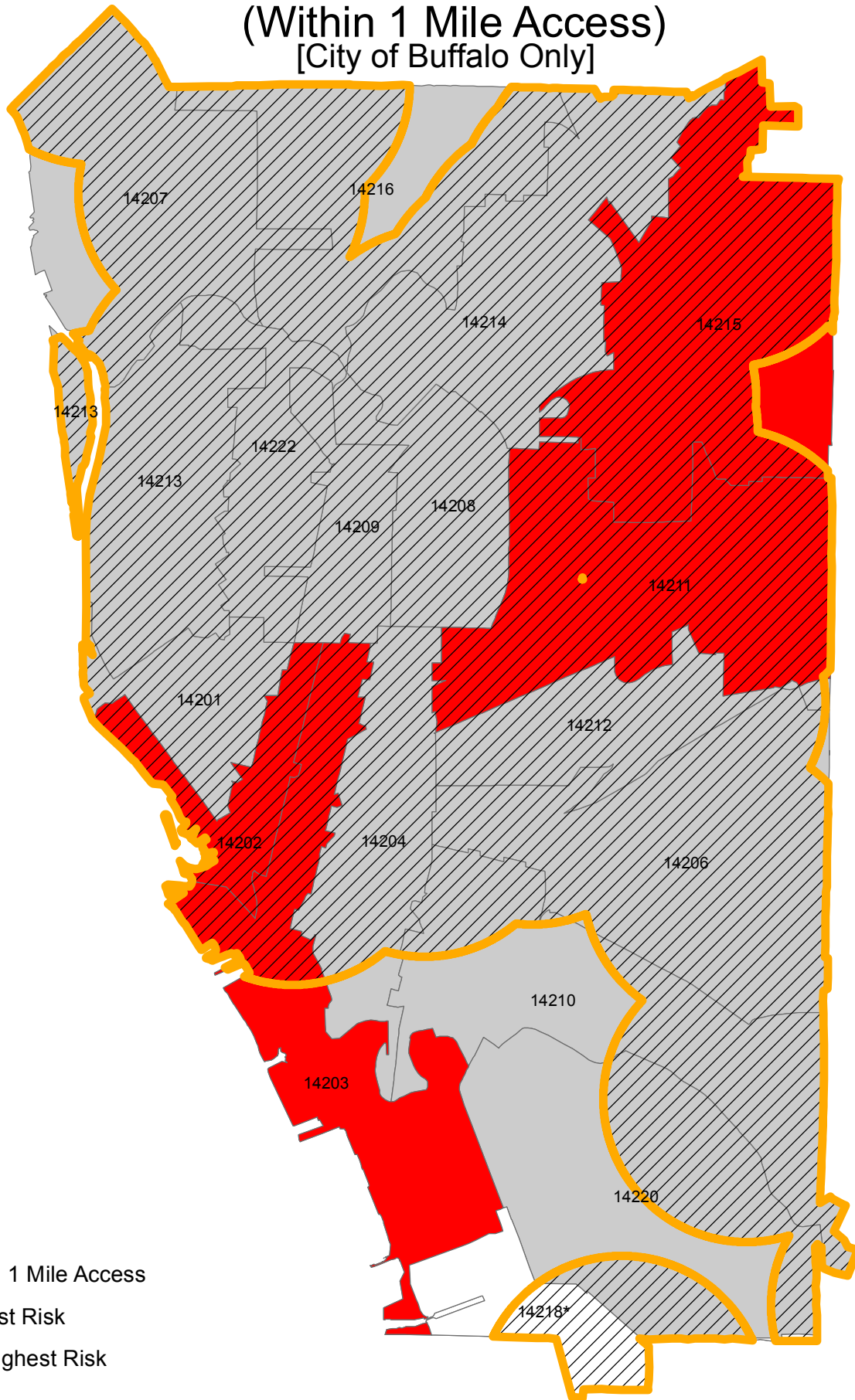


# Accessibility to Support Programs (Within 10 Miles Access)




[Erie County Excluding City of Buffalo, with Municipal Boundaries]



# Accessibility to Mental Health Programs (Within 1 Mile Access) [City of Buffalo Only]



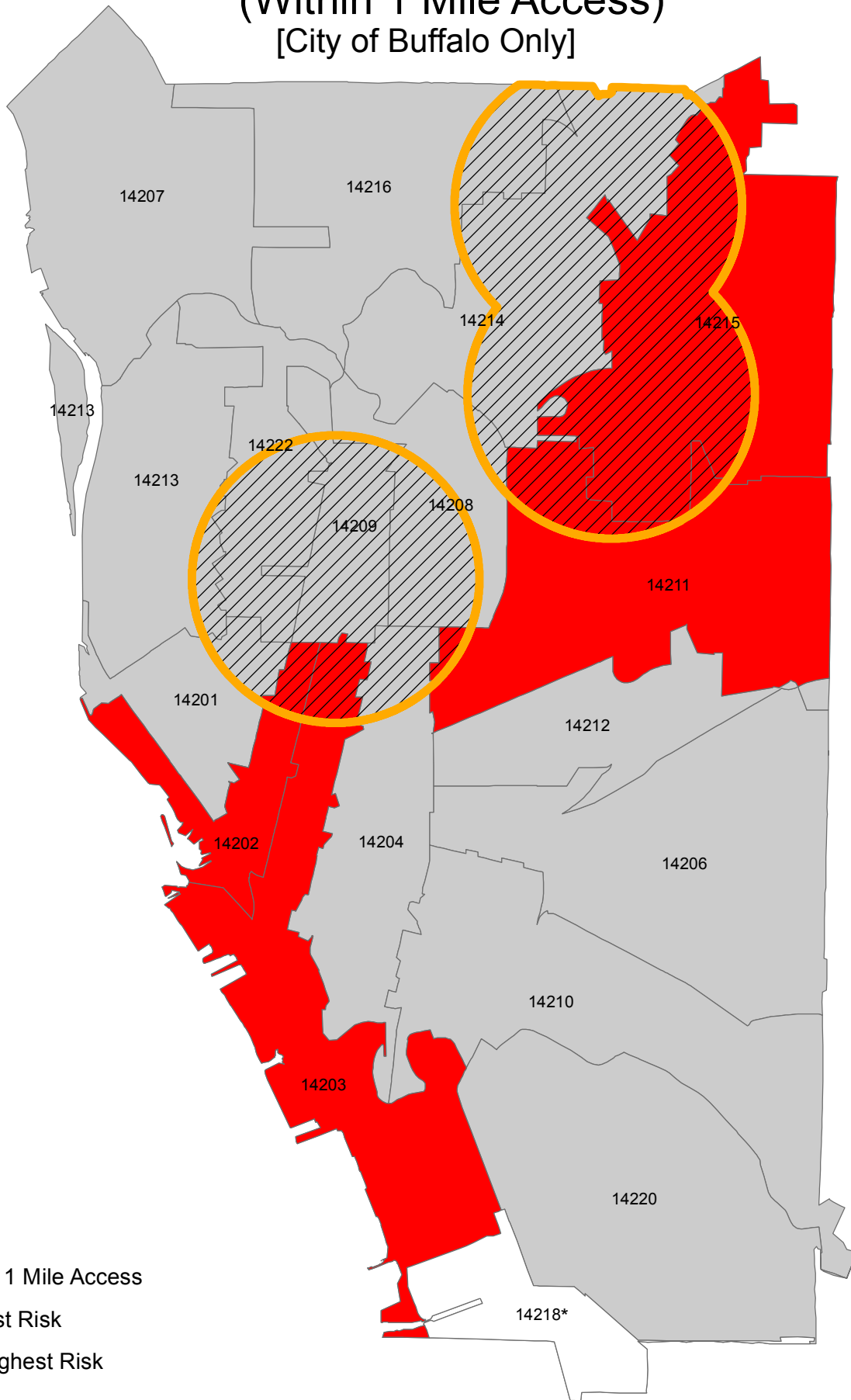
## Legend

-  Within 1 Mile Access
-  Highest Risk
-  Not Highest Risk






\*The majority of ZIP Code 14218 is outside the City of Buffalo.

# Accessibility to Emergency Programs (Within 1 Mile Access) [City of Buffalo Only]



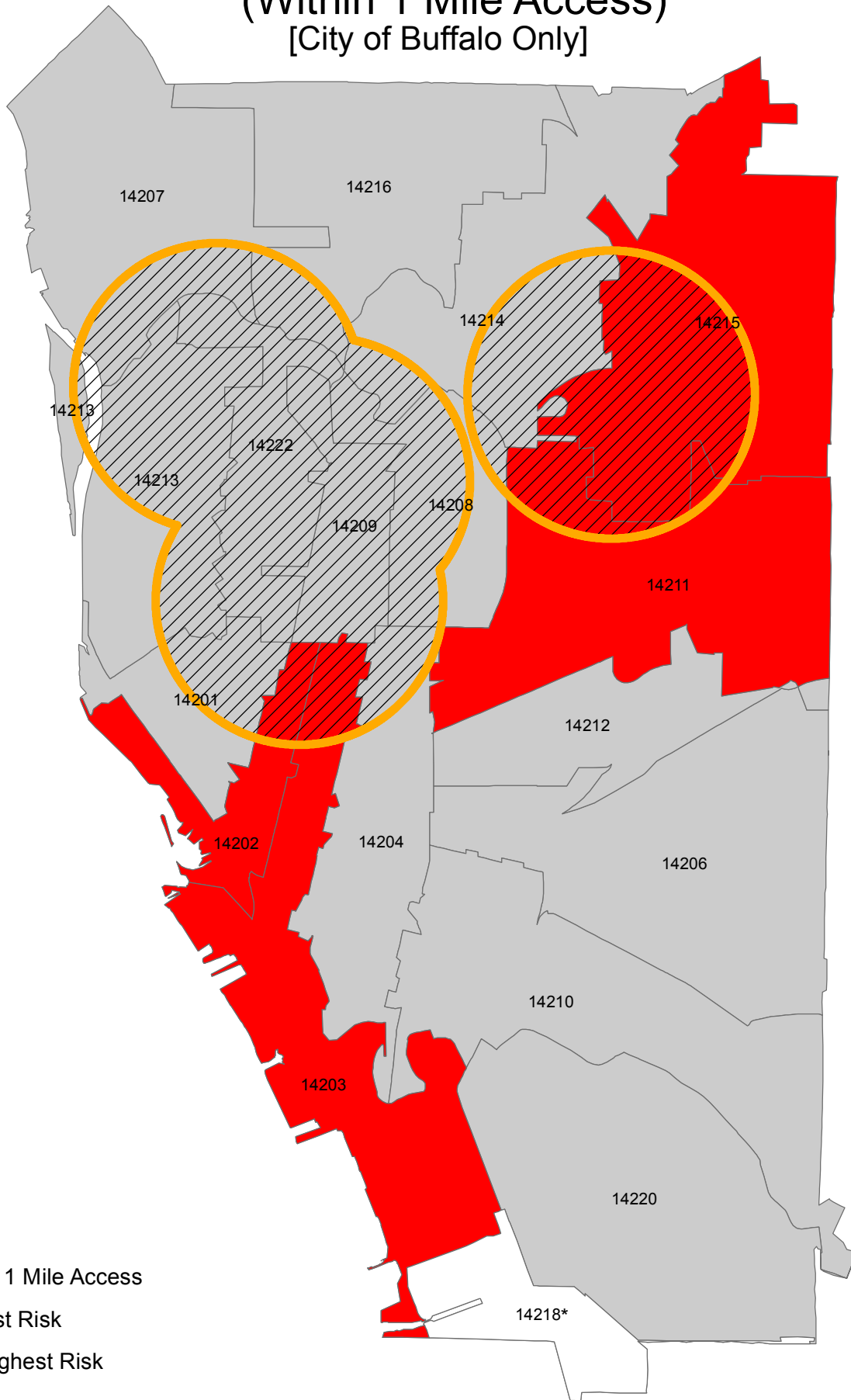
## Legend

-  Within 1 Mile Access
-  Highest Risk
-  Not Highest Risk






\*The majority of ZIP Code 14218 is outside the City of Buffalo.

# Accessibility to Inpatient Programs (Within 1 Mile Access) [City of Buffalo Only]



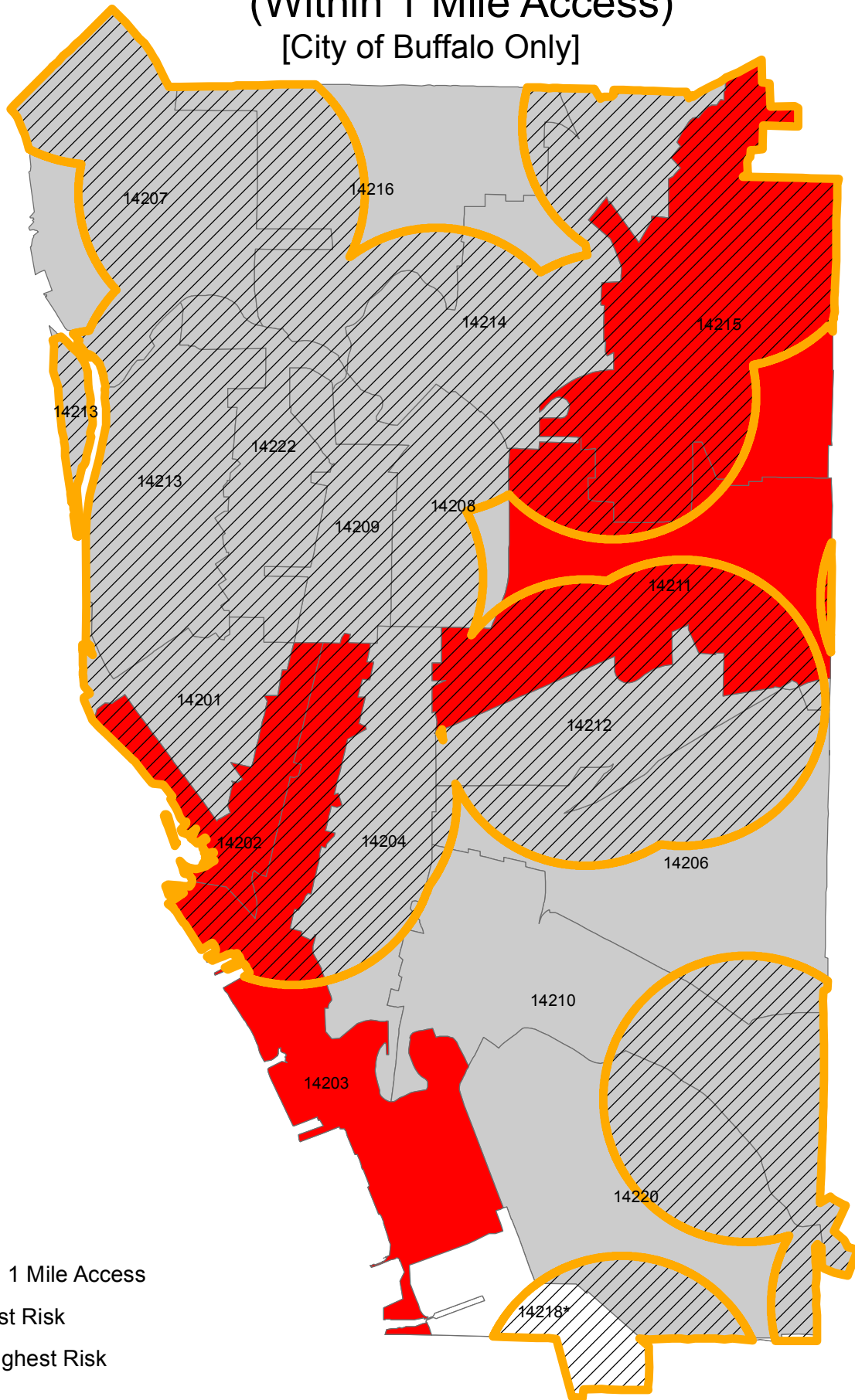
## Legend

-  Within 1 Mile Access
-  Highest Risk
-  Not Highest Risk






\*The majority of ZIP Code 14218 is outside the City of Buffalo.

# Accessibility to Outpatient Programs (Within 1 Mile Access) [City of Buffalo Only]



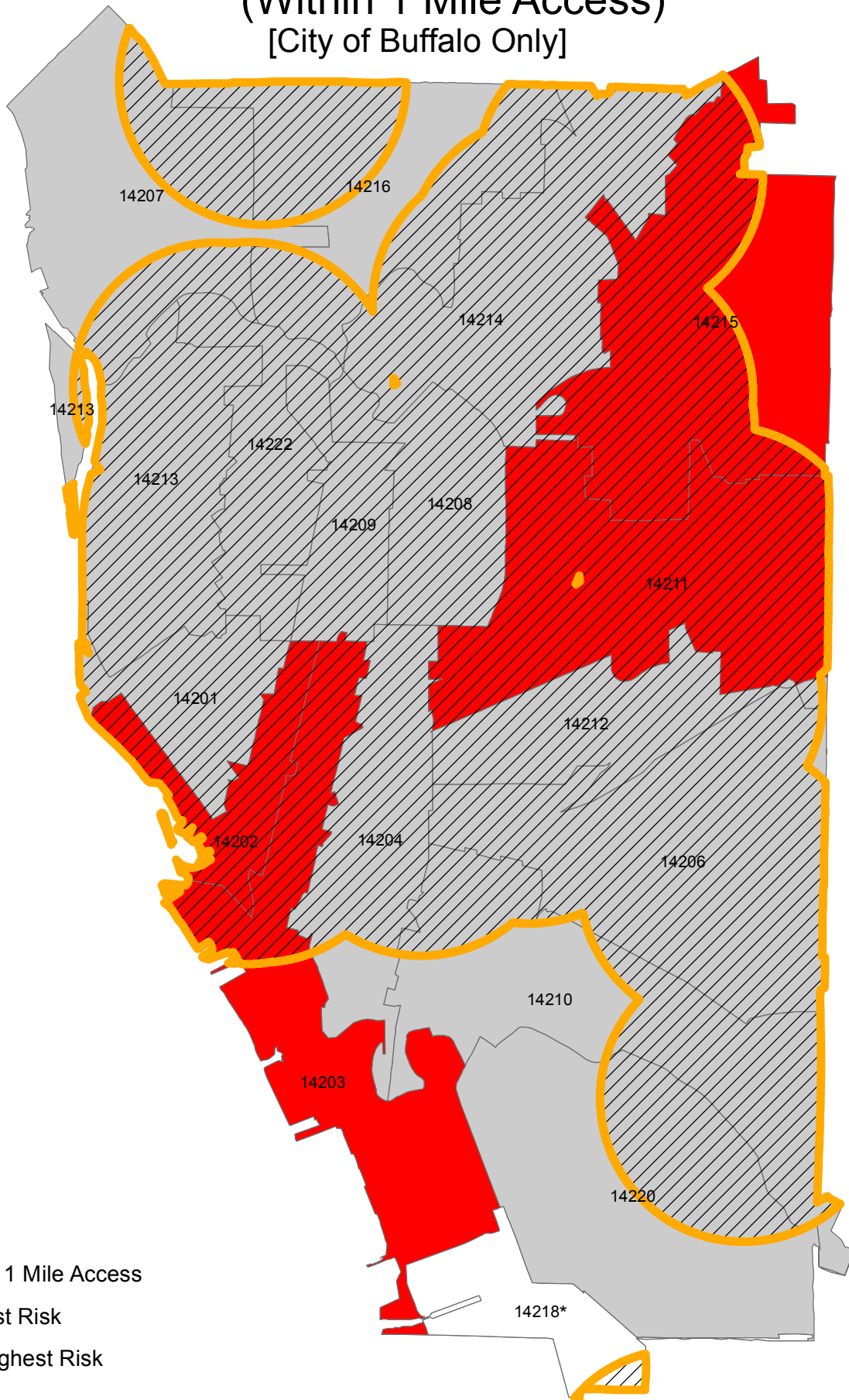
## Legend

-  Within 1 Mile Access
-  Highest Risk
-  Not Highest Risk






\*The majority of ZIP Code 14218 is outside the City of Buffalo.

# Accessibility to Support Programs (Within 1 Mile Access) [City of Buffalo Only]



## Legend

-  Within 1 Mile Access
-  Highest Risk
-  Not Highest Risk

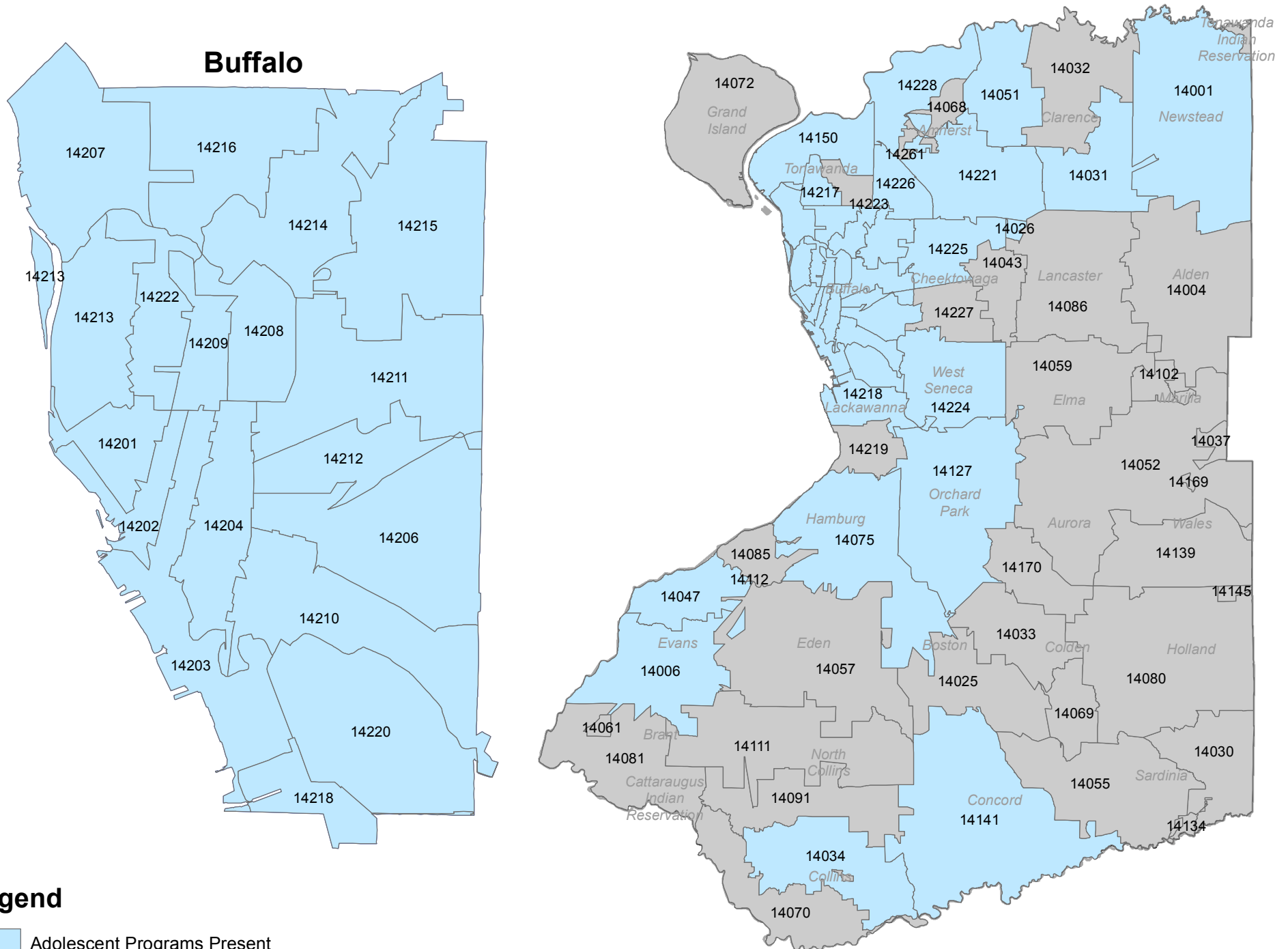


\*The majority of ZIP Code 14218 is outside the City of Buffalo.





# ZIP Codes with Mental Health Programs for Adolescents



# ZIP Codes with Mental Health Programs for Adults

